



# AQUAFIX<sup>Inc.</sup>

## 2023 CATALOG

## BIOLOGICAL WASTEWATER INNOVATIONS



### LAB SERVICES

pg 2



### UPSET RECOVERY

pg 10



### FOAM & FILAMENTS

pg 16



### GREASE REMOVAL

pg 20



### NUTRIENT SUPPLEMENTS

pg 26



### MIDGE FLIES

pg 28



### SLUDGE REDUCTION

pg 30



### ODOR CONTROL

pg 36



### CHEESE & DAIRY

pg 38



### ANAEROBIC DIGESTION

pg 40

ORDER 888.757.9577 | [WWW.TEAMAQUAFIX.COM](http://WWW.TEAMAQUAFIX.COM)



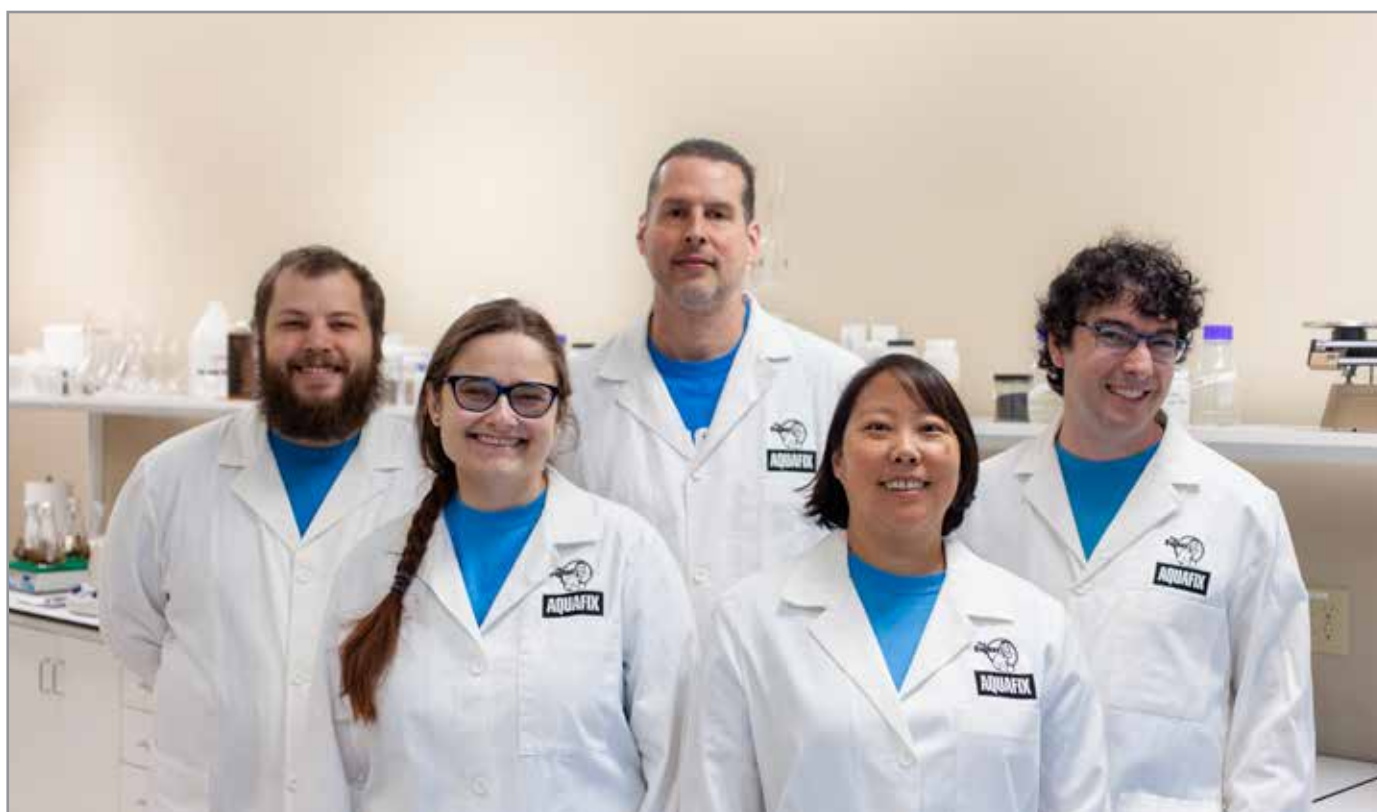
## *Welcome to the Aquafix Laboratories.*

At Aquafix we empower wastewater operators by providing laboratory services and biological science products that are unparalleled in the industry. As a leader in the research of biological communities in wastewater our knowledge is current and its our goal to share that information with the customer.

So whether you are working with one of our office team, a member of our laboratory or one of our technical consultants you will find us knowledgeable, responsive and easy to work with.

# Kevin Ripp

- Kevin Ripp *aka "The Bugman"*  
Director of Science and Innovation



**UNIVERSITY  
RESEARCH PARK**  
UNIVERSITY OF WISCONSIN-MADISON



**AQUAFIX**  
**Wastewater Laboratories**

University of Wisconsin Research Park

# NEW & IMPROVED FOR 2023

## **QWIK-ZYME D™**

Designed to reduce sludge hauling by at least 15% in digesters and lagoons.

pg 30



## **MIDGE FLY COMPLETE™**

Target midge flies in the larvae stage to stop the cycle at the source.

pg 28



## **DEFOAM 3000™**

Improved formula is 25% more effective and longer lasting.

pg 18



**“SAFER WATER AND BETTER LIVES THROUGH PIONEERING BIOSCIENCES”**

ORDER 888.757.9577 | [ORDERS@TEAMAQUAFIX.COM](mailto:ORDERS@TEAMAQUAFIX.COM) | [WWW.TEAMAQUAFIX.COM](http://WWW.TEAMAQUAFIX.COM)

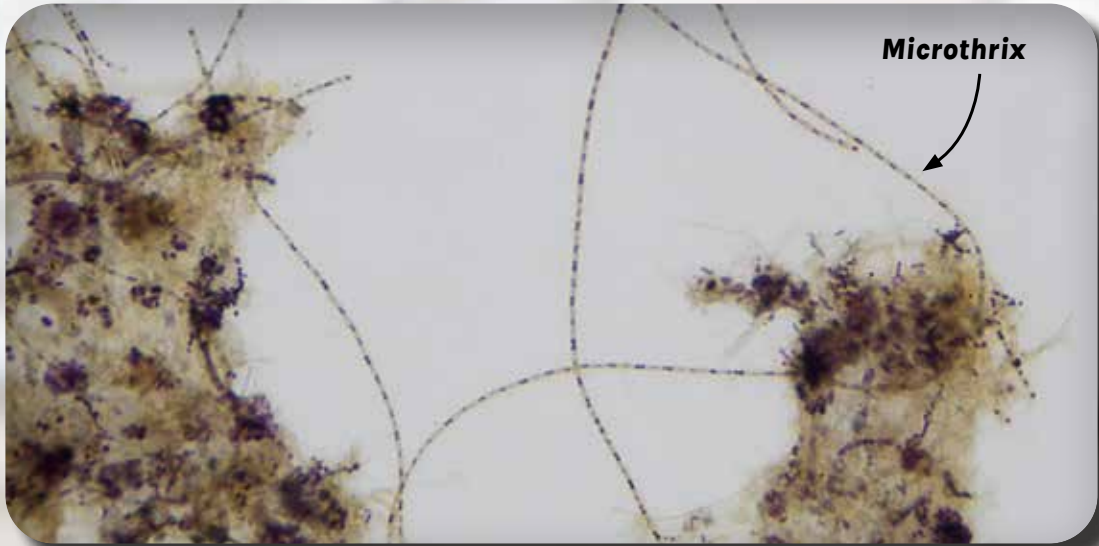


# AQUAFIX LABORATORIES MICROANALYSIS

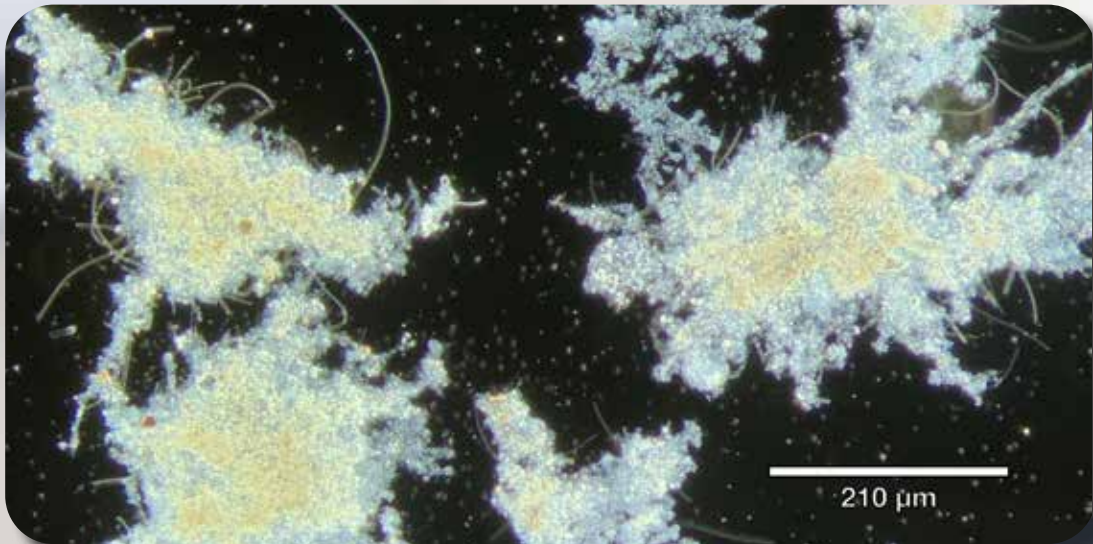
<b>MICROANALYSIS &amp; FILAMENT ORIGINS</b>  <b>\$400</b>	<ul style="list-style-type: none"><li>• Results within 24-48 hours after sample arrival</li><li>• Identification of major and minor filaments</li><li>• Precise explanation of filament presence and origin</li><li>• Overview of floc structure, sludge age, and oxygen penetration</li><li>• Treatment and process recommendations</li></ul>
<b>PROACTIVE MICROANALYSIS PROGRAM</b>  <b>\$1,400</b>	<ul style="list-style-type: none"><li>• Results in 2-3 business days</li><li>• 4 pack of Microanalysis and Filament Origins tests, use them at your own pace</li><li>• Analysis of the active biomass ratio and biological stress index</li><li>• Discover potential upsets before they occur and monitor conditions</li><li>• Save \$200 overall</li></ul>
<b>TREATABILITY TESTING</b>  <b>CALL FOR A QUOTE</b>	<ul style="list-style-type: none"><li>• Results in 1-3 months</li><li>• Collaborate with Aquafix to understand difficult wastewater influents</li><li>• Guidance relative to toxicity such as PAA, quats, and sulfide issues</li><li>• Optimize the treatment of your specific high strength BOD</li><li>• A wide variety of testing is available</li></ul>

**ALL TEST PROGRAMS INCLUDE  
ONE ON ONE DISCUSSIONS WITH  
A MEMBER OF OUR LAB TEAM**

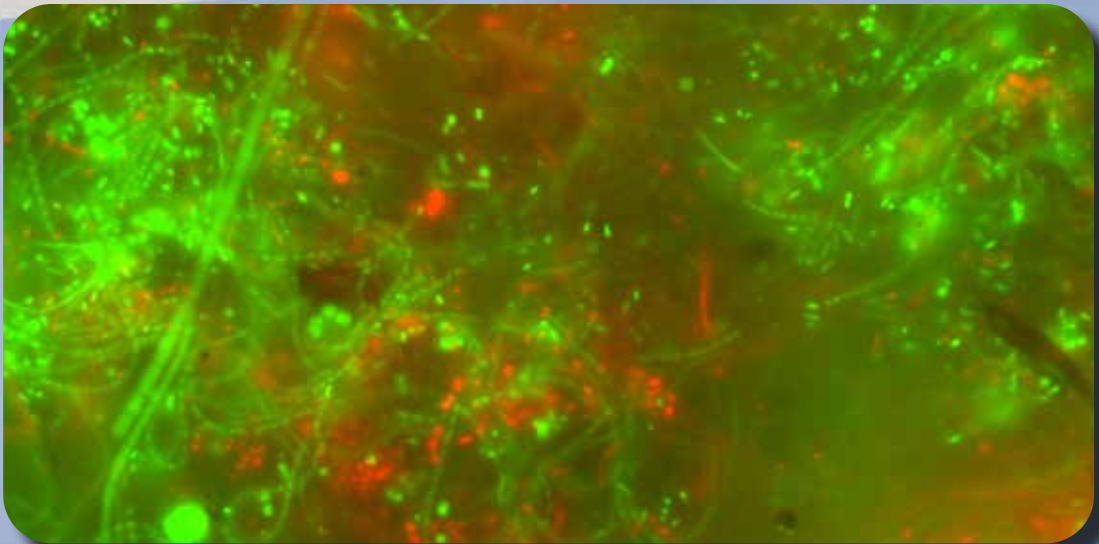
**FILAMENT ID**



**FLOC STRUCTURE**



**LIVE/DEAD CELL ANALYSIS**





# ANAEROBIC TESTING TO IMPROVE METHANE GENERATION

For operators looking to avoid upsets and generate higher levels of methane gas, our NEW Anaerobic Chemistry Screening provides an overview of the health of your system.

After the analysis, we discuss results with the operator and provide tailored recommendations to boost anaerobic performance.

## GET THE CLEAREST PICTURE OF BIOAVAILABLE ANAEROBIC NUTRIENTS

### ANAEROBIC CHEMISTRY SCREENING

**\$1,150.00**

#### Soluble Nutrient Analysis:

- Aluminum
- Ammonia
- Arsenic
- Barium
- Boron
- Cadmium
- Calcium
- Chromium
- Cobalt
- Copper
- Iron
- Lead
- Manganese
- Magnesium
- Molybdenum
- Nickel
- Potassium
- Selenium
- Sodium
- Zinc

#### Sludge Composition Analysis:

- Volatile Solids %
- COD (mg/L)
- Alkalinity (mg/L)



**RESULTS IN  
2-3 WEEKS**



# AQUAFIX WASTEWATER LABORATORIES

## MEET OUR TEAM OF DEDICATED MICROSCOPY EXPERTS



**Dan McKeaton, Director of Wastewater Education**

Dan holds a Bachelor's degree in chemistry and has been our wastewater toxicity and anaerobic troubleshooting expert since 2014. He is also committed to promoting wastewater education and has presented on his research at various events, such as the WEFTEC technical symposium.



**Deborah Lee, Lead Microbiologist**

Deborah holds a Master's Degree in microbiology and has been leading the Aquafix research on microbial communities and their relationship with nitrogen and ammonia in wastewater since 2009. Her testing on nitrifying bacteria in the Aquafix lab has led to many product developments and improved formulations.



**Natalie Walton, Microscopist**

Natalie holds her Bachelor's degree in forensic investigation, and at Aquafix she focuses on performing microscopic analysis for customer samples, as well as growing our online microorganism database. She looks forward to sharing her knowledge about what she sees under the microscope and the meaning behind it with operators and wastewater professionals.



**Mike Lanphier, Research Scientist**

Mike studied Cell Physiology and analytical chemistry. He studies customer samples in our treatability programs to focus on customized treatment programs, especially in cases with PAAs and QUATs. We grow our nitrifiers in-house, and Mike works to study their effectiveness and uptake rate.



**Saylor Gilbert, Research Scientist**

Saylor is the newest member of our lab team and holds a Bachelor's degree in microbiology. He analyzes customer samples with extreme toxicity issues and is focused on perfecting and streamlining the removal of fats, oils, and grease in aerobic wastewater systems.



# CASE STUDIES & RESEARCH PARTNERSHIP

KNOWLEDGEABLE PARTNERS, DATA DRIVEN SOLUTIONS

Aquafix is proud to announce our Research Partnership Program. Upon a partnership agreement, we will provide free or discounted treatments in exchange for your data and feedback. This opportunity is available to all qualifying\* wastewater facilities, both municipal and industrial.

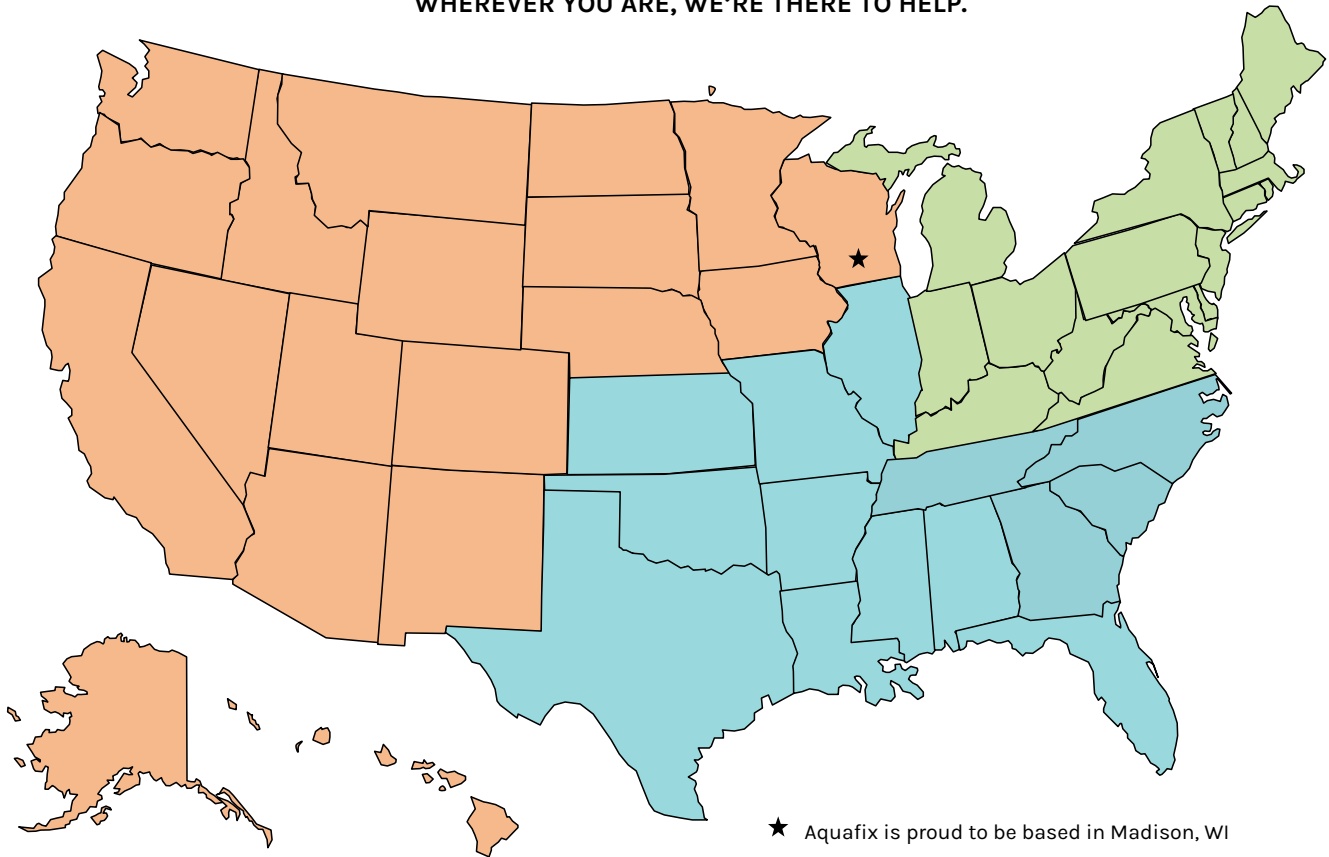
Contact your technical service representative or email [info@teamaquafix.com](mailto:info@teamaquafix.com) for more details and see if you qualify.



\*Must meet minimum program requirements, including but not limited to: average daily flow, treatment length, data reporting, plant history, release form, specific issues and severity, facility capabilities, and more.

# AQUAFIX TECHNICAL SERVICE TEAM

WHEREVER YOU ARE, WE'RE THERE TO HELP.



**LONDON WIET**



Landon has his Bachelor of Science from UW-Madison and has been working with wastewater facilities at Aquafix for over 10 years. He currently oversees our international wastewater division.

**JOSH POULIN**



Josh is the most recent addition to the Aquafix team. He enjoys finding creative solutions to the unique challenges that face both industrial and municipal wastewater treatment plants across the north east.

**TYLER BENZ**



Tyler studied biological and environmental sciences at UW-Madison and now has helped operators across the country identify, understand, and solve a variety of wastewater ailments.

**CHRIS GROVE**



Chris works closely with our customers and is great at troubleshooting wastewater problems. He embodies the Aquafix values of creativity and humility with his solutions.



**PRODUCTS MADE TO ORDER,  
MOST SHIP OUT NEXT DAY**



**FAST ACCOUNT SET UP,  
MUNICIPALITIES GUARANTEED**



**ORDERING IS EASY  
ONLINE OR BY PHONE**



**ACCESS TO OUR EXPERT  
MICROANALYSIS TEAM**



## LOWER AMMONIA NOW

Nitrifiers make up 1-8% of your active bacterial biomass. And they happen to be the most fragile and prone to toxicity or washout. When nitrification is lost, Dynamic Duo is the fastest route to recovery.

Establishing nitrification without seed nitrifiers is extremely slow in cold water. For every 10 degree drop in temperature, nitrifying bacteria grow half as fast. Dynamic Duo overcomes this challenge by adding a flood of new nitrifiers.

## FULL RECOVERY IN 6-10 DAYS



### DYNAMIC DUO™

FOR DOSE RATES, SEE PAGE 58

**STRONGER TOGETHER.** This combination packs a powerful punch helpful to the growth and reproduction of nitrifying bacteria. Dynamic Duo is our perfect combo of Nitrifiers and Ammonia Assimilators, which contain active bacteria including *Nitrosomonas*, *Nitrobacter*, *Nitrospira*, and heterotrophic nitrifiers at the highest concentration in the industry.

2 gal case (1 of each) ..... \$550.00/case

Quickly Lowers

# Ammonia, TKN, Nitrite

Guaranteed

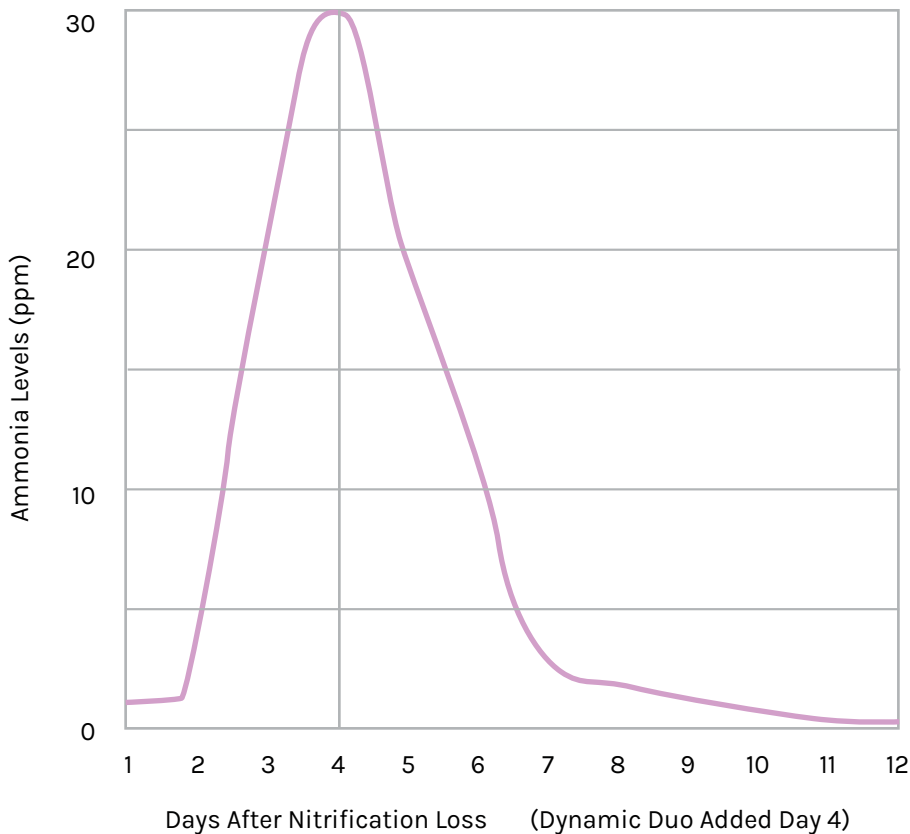
## 100% Success Rate

One-Day Delivery

## Get It Tomorrow



### NITRIFICATION RECOVERY: FOOD PROCESSING PLANT



*"Biocides from a food processor sent our effluent ammonia to 30 ppm.*

*We recieved nitrifiers the next day and immediately after adding them ammonia started dropping."*



- Nick, IL

## SHIELD BACTERIA FROM ALL FORMS OF TOXICITY

CounterQuat works by further developing the defensive structures that bacteria use to shield themselves from environmental toxins. CounterQuat was created to aid wastewater

operators who have no control over toxic compounds that may come down the line, but want to protect their wastewater biology and avoid noncompliance.

## BEST PROTECTION FROM QUATS AND PAA IN WASTEWATER



### COUNTERQUAT™

FOR DOSE RATES, SEE PAGE 55

CounterQuat is a next generation technology developed to protect wastewater bacteria from toxicity, especially the effects of quaternary amines.

- Protects against chemical toxicity
- Lowers effluent TSS
- Promotes flocculation
- Safe and easy to use

To read more about quaternary ammonium toxicity and how CounterQuat protects cells visit our website.

5 gal case ..... \$45.00/gal

55 gal drum ..... \$43.00/gal

275 gal tote ..... \$35.00/gal



## Protect From:

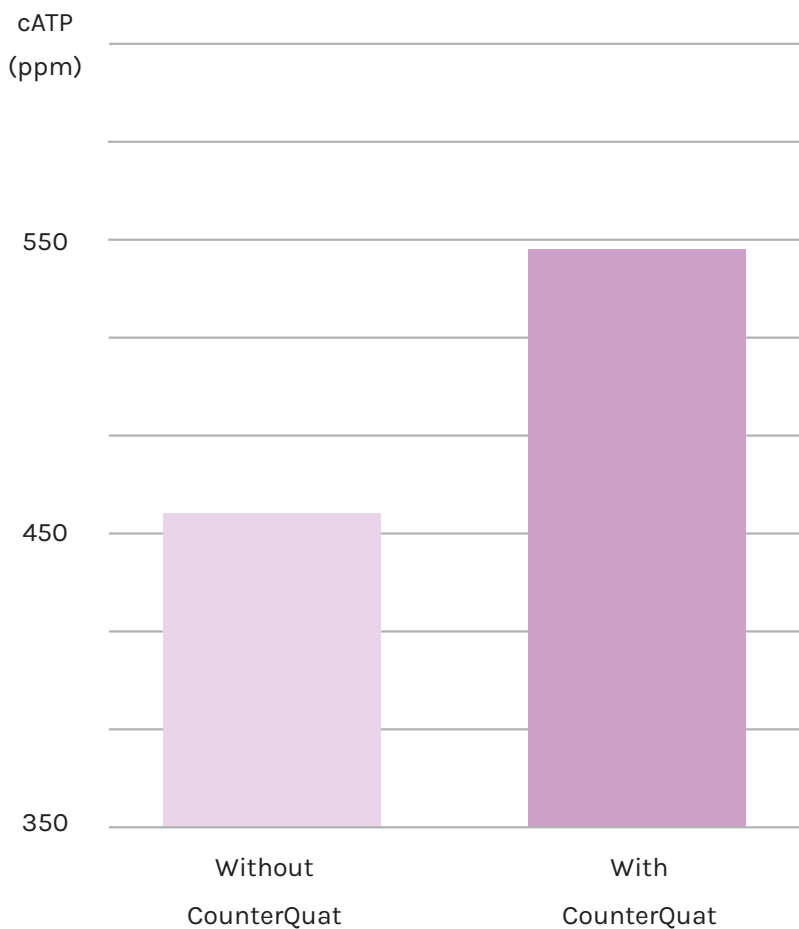
Quaternary amines

Peroxyacetic (peracetic) acid

Surfactants & phenols

Chlorine & bleach

## Activity of biomass after 50 ppm dose of quat



*"Our plant frequently receives toxicity from the industries upstream. CounterQuat has helped drastically reduce the effects that would otherwise wipe out our bugs."*



- Justin & Braxton, WI

## RELIABLE UPSET RECOVERY

When upsets happen, VitaStim Rebuild adds new bacterial cultures to speed recovery. The bacteria in VitaStim Rebuild were selected for their ability to floc well in difficult conditions.

Quick-to-floc bacteria are the key to speeding recovery. The stimulants in VitaStim Rebuild help to boost the health and growth of native bacteria as well.



### VITASTIM® REBUILD

FOR DOSE RATES, SEE PAGE 63

Recover your mixed liquor health and volume quickly after an upset, or during new plant startup. This product contains a combination of specially selected bacteria and biostimulants to accomplish both tasks.

30 lb pail ..... \$17.50/lb  
1/2 lb or 1 lb packets available

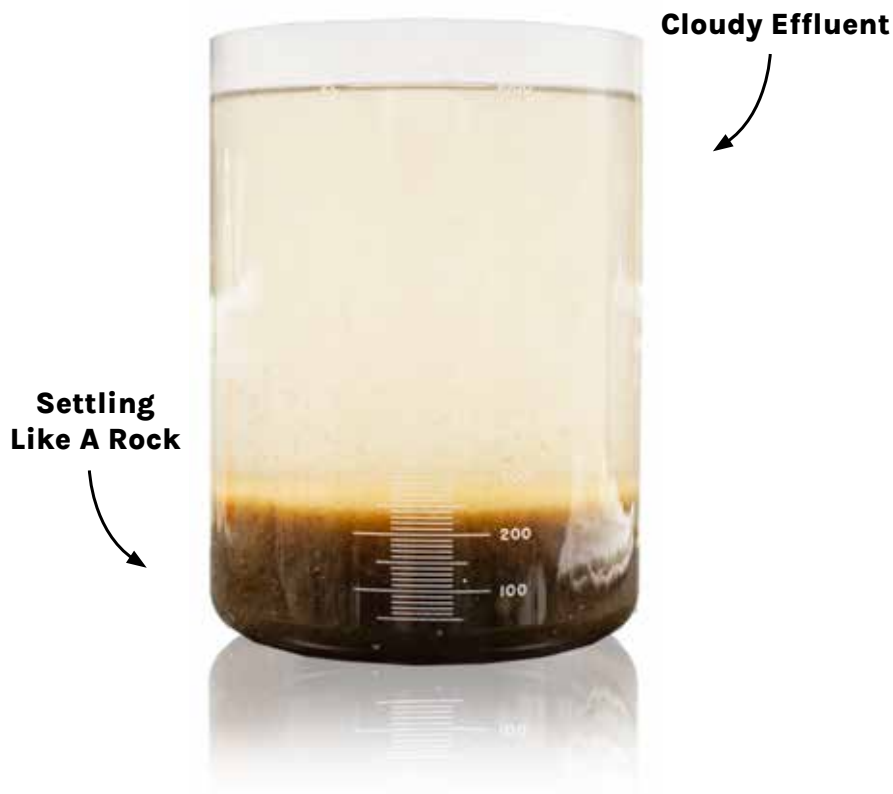
## For Quick Recovery From:

Toxic influent

New plant startup

Cloudy effluent

Red worms eating MLSS



Settling like a rock, poor color, and cloudy effluent are all common signs of an upset. Typical MLSS contains only up to 30% active biomass. When your plant gets hit, losing even a little of your healthy MLSS can have major impacts.

*"VitaStim Rebuild works really well. Builds bacteria faster than I thought it would. I have no complaints about any of these products. I will continue to use them all."*



- Greg, AR



## NO MORE NOCARDIA

Getting rid of foaming filaments is one of the key areas where Aquafix prides itself. Foaming filaments like *Microthrix*, *Nocardia*, or Type 1863 can be difficult to get rid of.

Our innovative Foam Buster and Qwik-Zyme L approach attacks the root cause of the foam. We guarantee results that will not only vastly outperform chlorinating, but will also help the biology.



### FOAM BUSTER™

FOR DOSE RATES, SEE PAGE 59

**ONE OF A KIND.** Foam Buster is a micronutrient blend that controls foaming by giving the naturally occurring bacteria biostimulants to outcompete foaming filaments.

30 lb pail ..... \$10.70/lb  
1 lb packets

50 lb bag ..... \$6.80/lb  
Bulk

### QWIK-ZYME L™

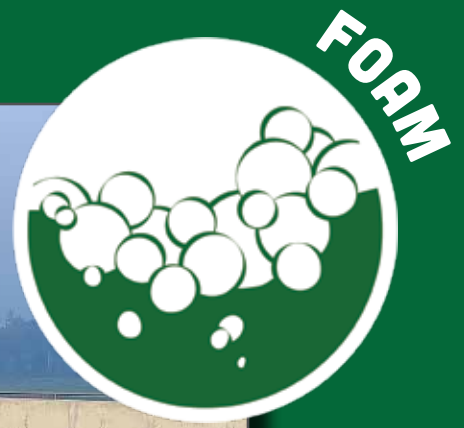
FOR DOSE RATES, SEE PAGE 62

**WORKS FAST.** Provides a fast way to break down grease and long chain fatty acids that can build up and cause foaming. Use with Foam Buster to accelerate results.

5 gal case ..... \$39.00/gal

55 gal drum ..... \$32.00/gal

275 gal tote ..... \$29.00/gal



## AEROBIC OR ANAEROBIC; KNOCK BACK FOAM FAST

DeFoam 3000 reduces the surface tension of the foam, knocking it down. This product is formulated for biological systems.

Unlike silicone-based industrial defoamers, DeFoam 3000 won't disrupt bacterial floc and works at low dose rates.

## IMPROVED FORMULA: 25% MORE EFFECTIVE AND LONGER LASTING



### DEFOAM 3000™

FOR DOSE RATES, SEE PAGE 57

DeFoam 3000 is a 100% concentrate defoamer and provides long lasting results.

- Safe for biological processes
- Long lasting in aeration basins
- Works well in anaerobic digesters
- Contains no emulsions, silicones, or PFAS

Specifically formulated for wastewater foam, DeFoam 3000 works well at low dose rates.

5 gal case ..... \$48.00/gal

55 gal drum ..... \$41.00/gal

275 gal tote ..... \$40.50/gal





## ACCELERATED DIGESTION OF GREASE BUILD-UP

Qwik-Zyme L is a concentrated blend of unique biocatalysts that turn grease into simple short chain fatty acids. These fatty acids are quickly available food source for the bacteria that's

already in your wastewater plant. Use it anywhere grease builds up, such as clarifiers, influent well, or aeration basin.



### QWIK-ZYME L™

FOR DOSE RATES, SEE PAGE 62

**WORKS FAST.** Provides a fast way to break down grease and long chain fatty acids that can build up and cause foaming. Use with Foam Buster to accelerate results.

- Mitigate foaming and FOG filament outbreaks
- Improves BOD removal and effluent TSS
- Use anywhere grease builds up such as clarifiers, influent well, or aeration basin, excellent in systems with high loading

5 gal case ..... \$39.00/gal

55 gal drum ..... \$32.00/gal

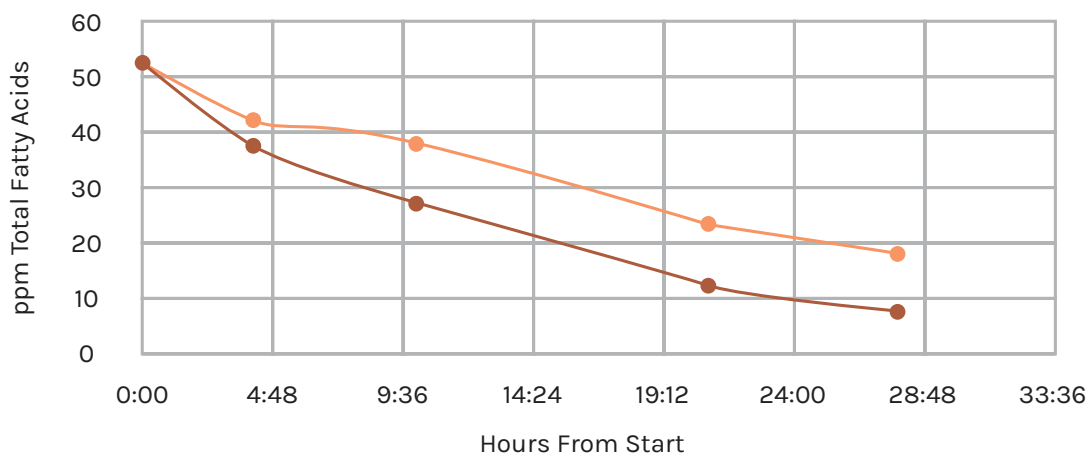
275 gal tote ..... \$29.00/gal

GREASE



### Fatty Acid Removal (Bacon Grease)

■ No Biocatalyst ■ Qwik-Zyme L



Wisconsin Institute for Sustainable Technology  
College of Natural Resources  
**University of Wisconsin-Stevens Point**



## REMOVE HARDENED LIFT STATION GREASE

Fast-acting GreaseZilla works best on old hardened grease. Entirely biological, it is safe to use and immediately starts degrading grease deposits. Pair with Bug On A Rope for the initial treatment of high grease lift stations.

GreaseZilla works great for:

- Removing FOG
- Lowering H<sub>2</sub>S and BOD
- Decreasing odors

## IMPROVED FORMULA: 2.5x MORE EFFECTIVE GREASE REMOVAL



### GREASEZILLA™

FOR DOSE RATES, SEE PAGE 59

GreaseZilla is a powerful biological technology that removes the hard, stuck-on grease rings while lowering odors. GreaseZilla is highly effective year-round.

- Lowers BOD in collection systems
- Lowers dangerous H<sub>2</sub>S levels
- Great for hardened-on grease deposits
- Most effective product on the market

5 gal case ..... \$40.80/gal

55 gal drum ..... \$35.00/gal

275 gal tote ..... \$31.62/gal



*"A company that  
recycles grease  
'accidentally'  
sends it to our lift  
station regularly.  
GreaseZilla is the  
only product that  
keeps it in check."*



- Adam, IL

## EASIEST WAY TO MAINTAIN GREASE CONTROL

Hang Bug On A Rope under the lift station's incoming flow for a slow and steady release of grease digesting bacteria and stimulants. It now contains a core with fast release bacteria for faster results. Ask about Bug On A Rope Jr. for situations with less than 50,000 GPD flow.

LIFT STATION FLOW ..... BOAR LASTS FOR:

50,000 GPD .....	10 weeks
100,000 GPD .....	4 weeks
500,000 GPD .....	2 weeks

## STICKS TO THE GREASE AND LASTS IN YOUR LIFT STATION LONGER



### BUG ON A ROPE®

FOR DOSE RATES, SEE PAGE 55

SET IT AND FORGET IT. Slowly releases two powerful systems of bacteria and nutrients for grease control. Pair with GreaseZilla for your worst lift stations.

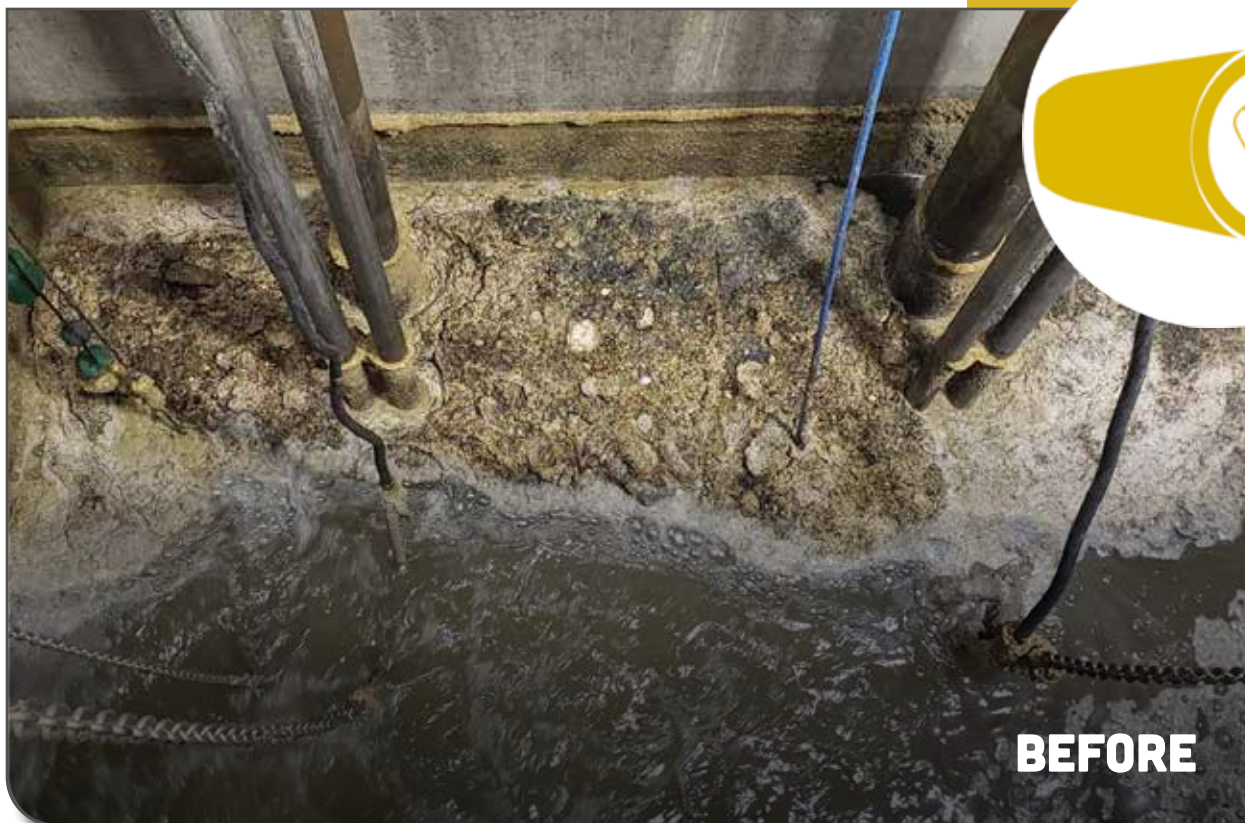
- Instant impact *pseudomonas* center
- Continuous release *bacillus* shell
- Call for tips on placement for best results

9 lb brick ..... \$165.00

Case of 4 bricks ..... \$575.00



**GREASE**



## THE MOST COMPLETE FOOD SOURCE FOR YOUR PLANT

Bring your mixed liquor back to life. SmartBOD puts more control back into the hands of the operator, to improve nutrient removal, and build a better floc. It is a better food source for less frequent feeding.

Offsets Problems Related To:

- Low Incoming BOD
- Poor Settling or Bulking
- Low F:M Filaments



### SMARTBOD™

FOR DOSE RATES, SEE PAGE 64

SmartBOD provides an advanced food supplement to promote flocculation and build a healthy biomass. As a dry powder, SmartBOD can be added by hand or with a screw feeder.

- Tested better than dog food or glycerin\*
- Promotes ammonia and phosphorous removal
- Balanced BOD source
- Highly soluble and easy to use

\*See independent study by University of Wisconsin-Stevens Point (WIST) under the SmartBOD page of our website.

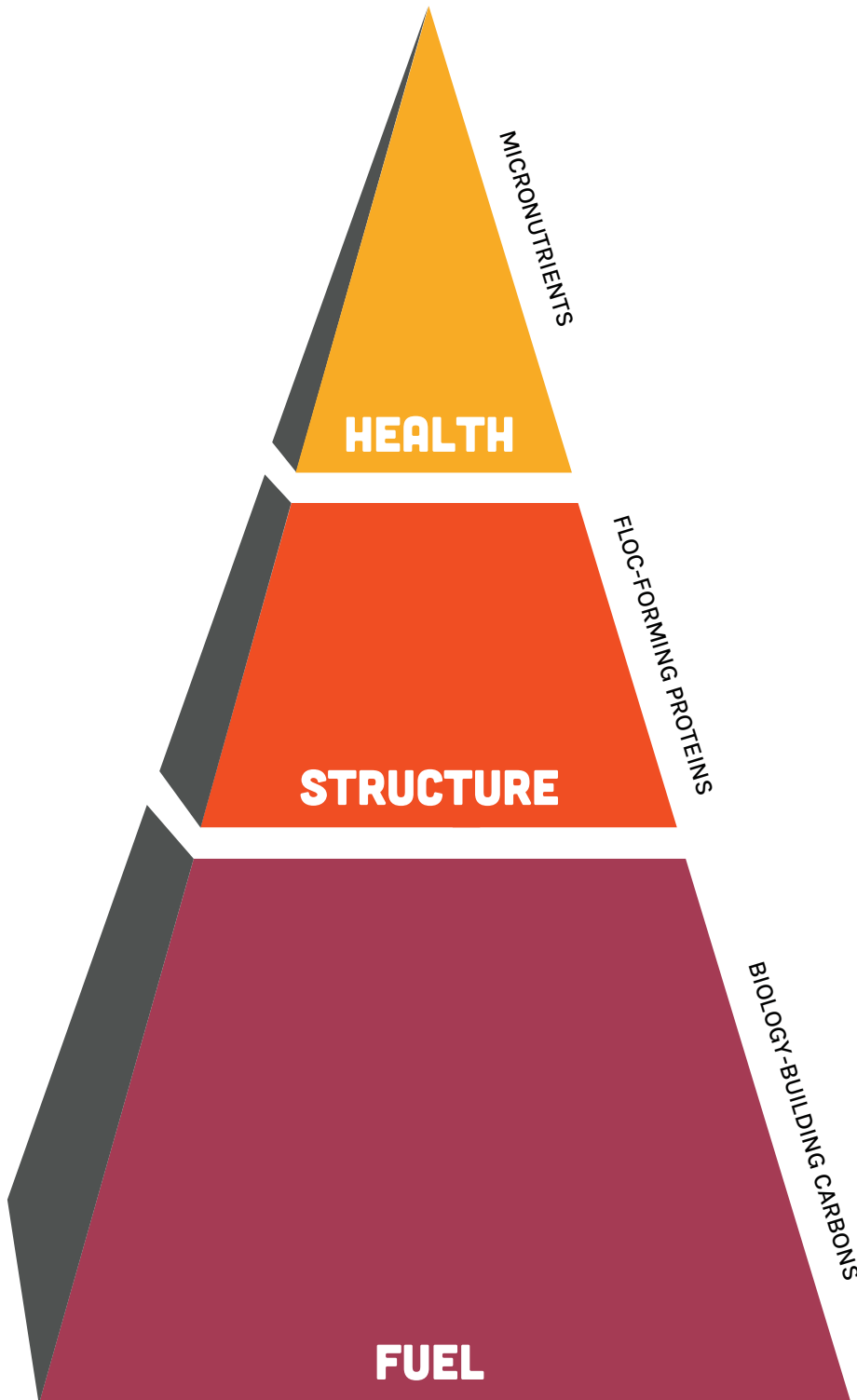
1-13 bags ..... \$6.50/lb

14-27 bags ..... \$5.50/lb

28+ bags ..... \$4.50/lb

*\*SmartBOD comes in 30 lb bulk pails.*

## SMARTBOD'S BALANCED NUTRIENTS BUILD BIOLOGY *BETTER*



*"The added nutrients from SmartBOD were exactly what we needed to improve biological activity and growth. We have seen significant improvement in nitrogen removal."*



- Emily, MI



## KILL RED WORMS & ELIMINATE MIDGE FLIES

Red worm and midge fly populations are quick to get out of control. The red worms grow by eating your mixed liquor and can wipe out an entire

plant's biomass.

Getting rid of them is easy. Your crew will thank you for putting a stop to the infestation.



### MIDGE FLY COMPLETE™

FOR DOSE RATES, SEE PAGE 60

AQUABACxt is an EPA-registered biolarvicide for controlling red worms and midge flies in wastewater treatment plants. Red worms protect themselves from AQUABACxt by hiding in fats, papers, fibers, and waxes. Lar-V-Zyme breaks down red worm cocoons, exposing more of the larvae to AQUABACxt.

10 gal case (5 gal of each) ..... \$570.00/case

\*call for bulk quantity or AQUABACxt solo purchasing options

# RED WORMS



## BETTER DIGESTER DECANT, HAUL LESS SLUDGE

Qwik-Zyme D was developed to condition aerobically digested sludge, improve decant, and lower sludge hauling costs up to 30%.

Even in the most modern plants, bar screens fall short allowing paper, grease, and fibers into the treatment plant. This causes poor settling and excess biosolids production.

## IMPROVED BIOSOLIDS REDUCTION TECHNOLOGY FROM THE AQUAFIX LABORATORIES



### QWIK-ZYME D™

FOR DOSE RATES, SEE PAGE 62

Qwik-Zyme D is a blend of biocatalysts that degrade undigested BODs.

- Cleaner, better decant and improved dewatering
- Reduces sludge hauling costs up to 30%
- Breaks down fats, plant and paper fibers into a source of food for your bacteria

A great technology for those looking to cut sludge hauling costs or belt press dewatering. See case studies on our website.

\*Qwik-Zyme D is a new and improved version of our original BugJuice formula.

5 gal case ..... \$74.00/gal

55 gal drum ..... \$68.00/gal

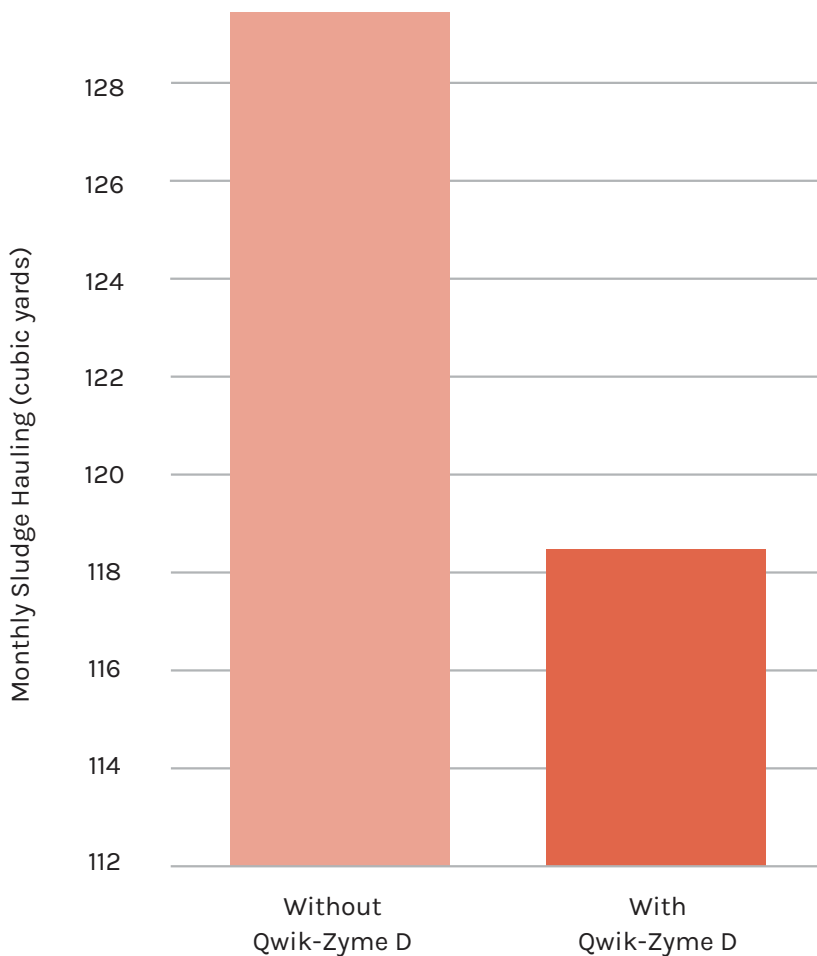
275 gal tote ..... \$64.00/gal



## SAVE BIG WITH QWIK-ZYME D!

- LESS SLUDGE HAULING
- BETTER DECANT

This municipal wastewater plant saved \$138,000 in sludge hauling annually with the addition of Qwik-Zyme D.



*"We used BugJuice in our aerobic digesters for several years and now use the updated Qwik-Zyme D instead which continues to be an excellent addition to our process."*



- Daniel, SC

## LAGOON SLUDGE TABLET TECHNOLOGY

Sludge Rx uses tablet technology to stimulate sludge and nutrient reduction from the bottom up. These unique tablets sink into the bottom sludge, whether it be in wastewater plants or lagoons, and reduce sludge at 1/10th the cost of mechanical cleaning. This technology comes from years of research in our laboratory studying the origin of excess nutrients.



**ALSO LOWERS NITROGEN**

## FULL SLUDGE REDUCTION STUDY ON PG 50



### SLUDGE RX®

FOR DOSE RATES, SEE PAGE 63

Sludge Rx is 1/10 the cost of dredging. Sludge Rx contains bacteria cultures and key biostimulants to maximize sludge reduction.

- Dramatically reduces sludge
- Lowers ammonia and nitrates
- Prevents phosphorus burps
- Tablet sinks directly to the bottom

1-9 bags ..... \$15.00/lb

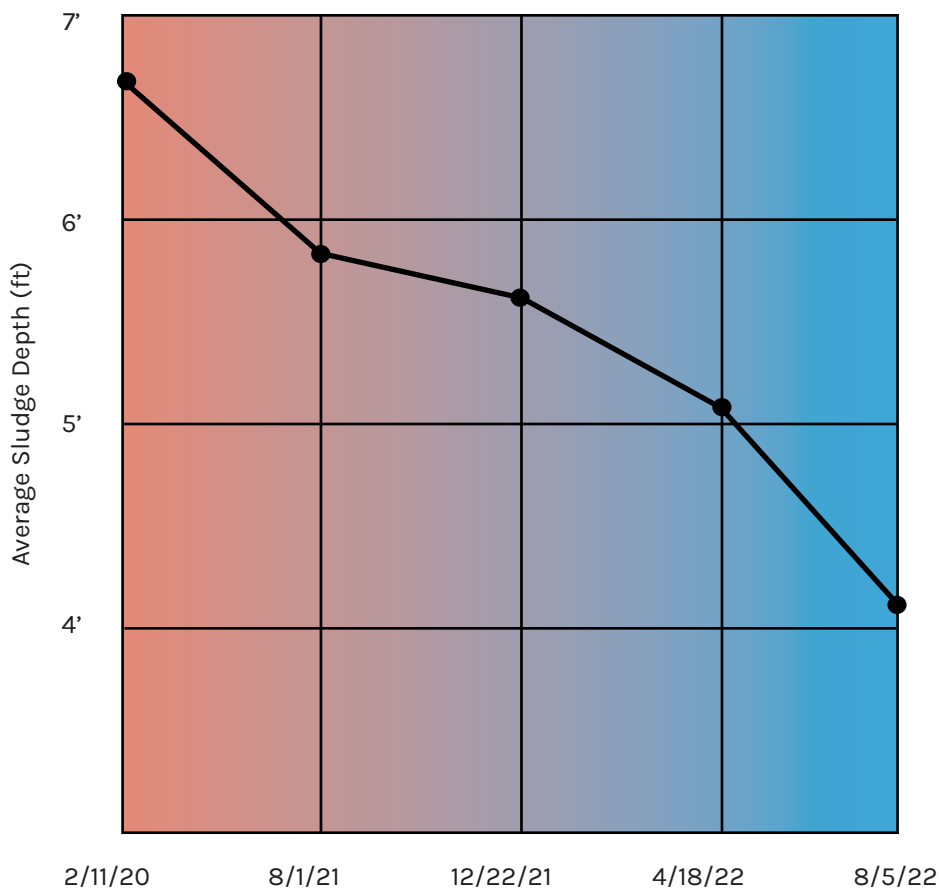
10-29 bags ..... \$11.00/lb

30+ bags ..... \$8.50/lb

*\*Sludge Rx comes in 30 lb bags*



## LESS SLUDGE = IMPROVED WATER QUALITY



In the graph above, as SludgeRx is used to reduce sludge levels, water quality is improved over time (represented by the gradient). Data supplied by the City of Sparta, GA.

*“With SludgeRx we saw a 2 ft reduction in the sludge over the entire pond within the period of a year which normalized the TSS:BOD ratio and delayed dredging.”*



- Amanda, GA



## MAXIMIZE LAGOON PERFORMANCE, ALL YEAR LONG

Developed in the Aquafix Laboratory, our VitaStim Lagoon Line is the easiest to use bacterial supplement. It adds helpful bacteria specifically selected for their proven ability to thrive in a lagoon.

- Lowers TSS
- Improves BOD removal
- Prevents pH spikes
- Reduces ammonia in winter
- Improve water quality and clarity



### VITASTIM® LAGOON LINE

FOR DOSE RATES, SEE PAGE 65

The VitaStim Lagoon Line products are a blend of bacteria and probiotics that help to lower ammonia and TSS in wastewater lagoons and ponds. Select the one that's best for the water temperature during the season you plan to apply (see details to the right).

VitaStim Summer Slam *Above 78°F* ..... \$19.00/lb

VitaStim Sludge Reducer *65-75°F* ..... \$16.00/lb

VitaStim Polar *Below 65°F* ..... \$17.00/lb



## WHICH BACTERIA IS RIGHT FOR YOU?

### VitaStim Polar

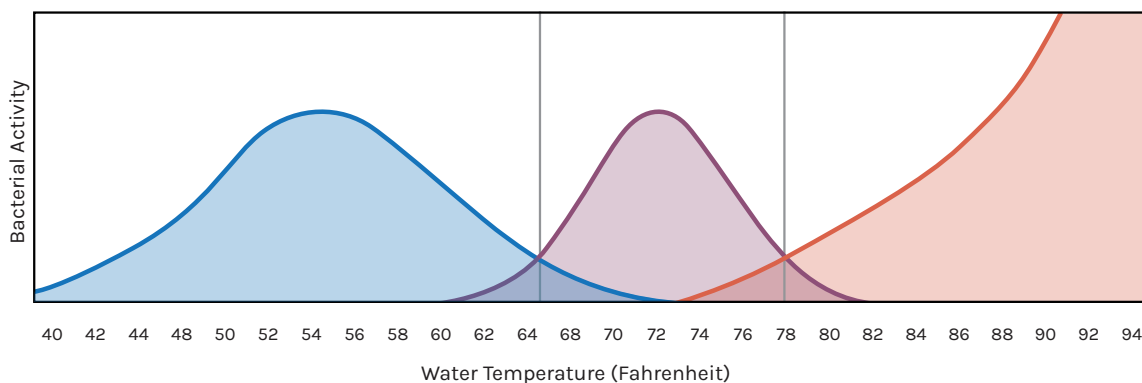
- 40-64° F water temperature
- Cold-loving bacterial cultures
- Lowers ammonia during winter

### VitaStim Sludge Reducer

- 65-78° F water temperature
- Clarifies the water column
- Lowers BOD and nitrogen

### VitaStim Summer Slam

- 78° F + water temperature
- Highest metabolism bacteria, for mid summer
- Facultative strains work in low DO environments



## ELIMINATE ODORS, MAKE YOUR NEIGHBORS HAPPY

When your wastewater system is surrounded by homeowners, our products provide an easy way to neutralize odors and stop the complaints. These are not masking agents.

The best part is, they are easy to use: just drip the product into the waste stream.

*See the details to the right for a free trial.*



### DAZZEL SEWER SWEETENER™

FOR DOSE RATES, SEE PAGE 56

Neutralize odors in the collection system, or as the waste stream enters the plant. These essential oils bind with odor causers, and neutralize them quickly.

5 gal case .....	\$35.70/gal
55 gal drum .....	\$27.00/gal
275 gal tote .....	\$25.50/gal



### DE-SULPH-A-NATOR™

FOR DOSE RATES, SEE PAGE 57

THE INSTANT H<sub>2</sub>S NEUTRALIZER.  
De-Sulph-A-Nator is easily metered into your system to diminish H<sub>2</sub>S gases and odors. It is a non-hazardous sulfide scavenger.

5 gal case .....	\$38.00/gal
55 gal drum .....	\$33.00/gal
275 gal tote .....	\$31.62/gal





## OXYFRESH™

FOR DOSE RATES, SEE PAGE 60

OxyFresh is a liquid source of oxygen that helps to eliminate odors caused by low dissolved oxygen and septicity. These conditions can occur in collection systems, WWTPs, and lagoons.

5 gal case ..... \$27.20/gal

55 gal drum ..... \$19.50/gal

275 gal tote ..... \$16.32/gal

ORDER 888.757.9577 | [ORDERS@TEAMAQUAFIX.COM](mailto:ORDERS@TEAMAQUAFIX.COM)

**ASK FOR YOUR  
FREE QUART AND  
TEST DAZZEL  
SEWER SWEETENER  
YOURSELF!**



## TACKLE DAIRY WASTE TREATMENTS LIKE A PRO

Qwik-Zyme P is a biocatalyst that breaks down difficult to digest proteins in dairy waste and high protein waste streams. In order to begin the process, they require the enzymes and stimulants that Qwik-Zyme P provides.

Utilize Qwik-Zyme P to increase settling, lower sludge production, speed BOD breakdown, reduce foaming, and minimize the effects of overloading in your wastewater treatment plant.



### QWIK-ZYME P™

FOR DOSE RATES, SEE PAGE 63

Qwik-Zyme P is ideal for overloaded dairy plants. It is a biocatalyst that accelerates the breakdown of dairy solids and complex proteins.

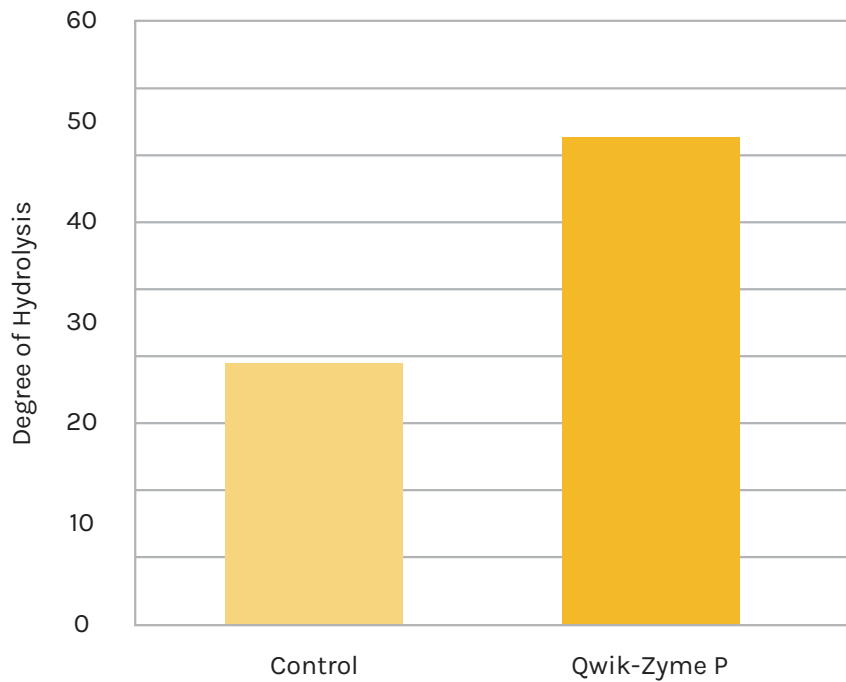
- Best for systems with high protein loading
- Lowers BOD and improves settling
- Resolves nitrogen deficiencies

5 gal case ..... \$53.00/gal

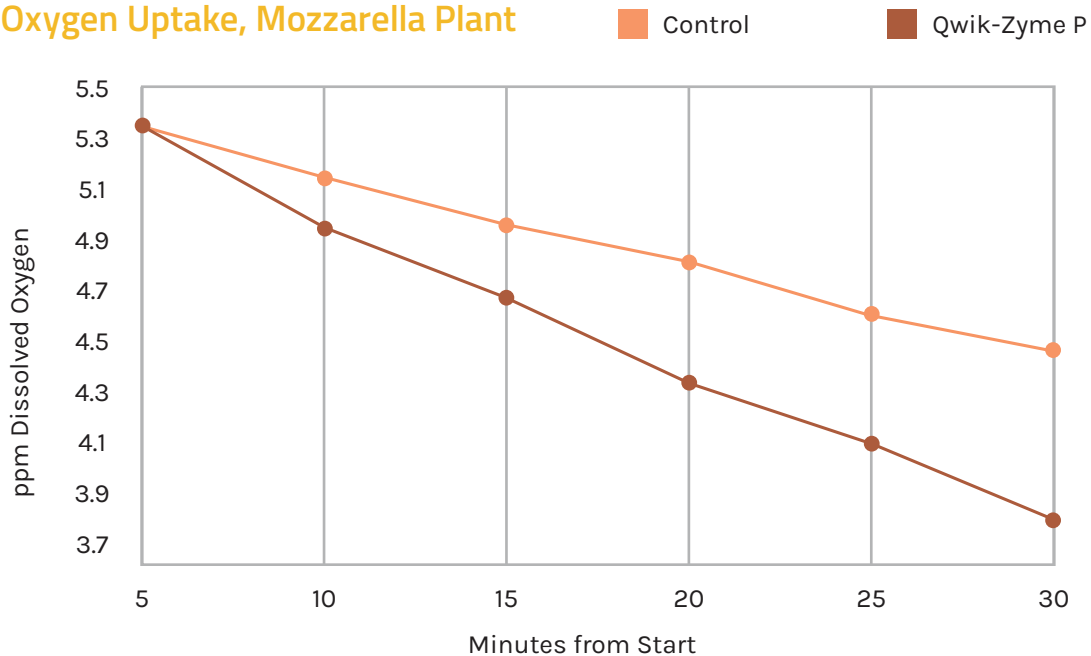
55 gal drum ..... \$45.00/gal

275 gal tote ..... \$44.00/gal

## Degree of Hydrolysis after 6 Hours: Control vs Qwik-Zyme P with Whey Protein



## Oxygen Uptake, Mozzarella Plant



\*Oxygen uptake rates are proportionate to substrate degradation rates.



## SPEED ANAEROBIC DIGESTION OF FATS, OILS, & GREASES

Ana-Zyme G is formulated to provide immediate reduction of fat, oil, and grease in anaerobic processes and prevents issues with grease caps and foaming.

Ana-Zyme G degrades a range of fatty acids such as linolenic, oleic, stearic, and palmitic as well as fish oils, triglycerides, dairy, and egg fat.



### ANA-ZYME G™

FOR DOSE RATES, SEE PAGE 53

Ana-Zyme G incorporates multiple types of lipid-degrading biocatalysts to provide dramatic hydrolysis of fat, oil, and grease.

- Prevents buildup of fatty acids
- Eliminates grease caps
- Avoids foaming due to fat, oil, and grease

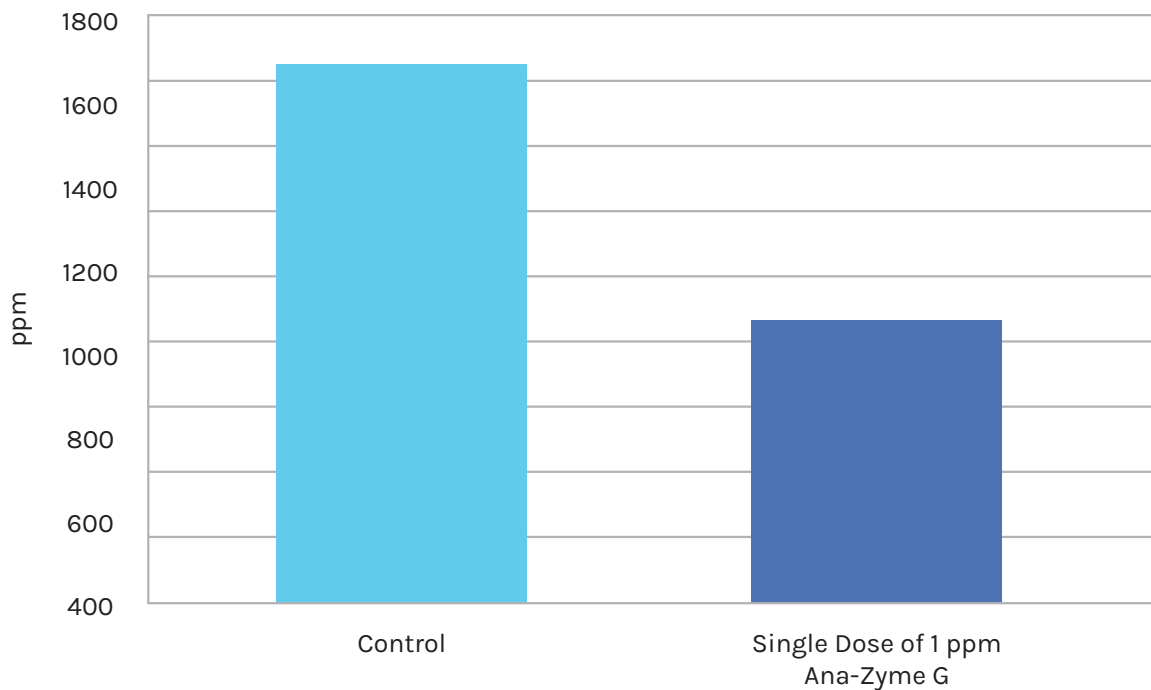
5 gal case ..... \$39.00/gal

55 gal drum ..... \$32.00/gal

275 gal tote ..... \$29.00/gal



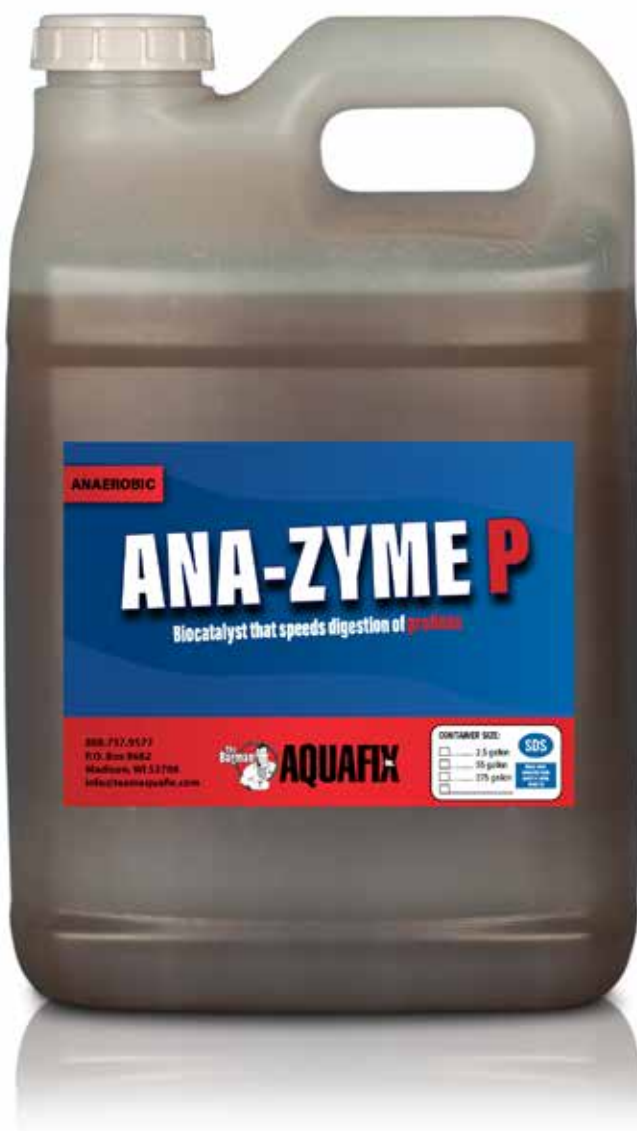
## TOTAL FATTY ACID CONCENTRATION AFTER 28 DAYS



## LOWER VOLATILE SOLIDS IN OVERLOADED DIGESTERS

Ana-Zyme P provides excellent breakdown of complex proteins commonly found in anaerobic waste of meat packing, food processing, and agricultural facilities.

The rapid hydrolysis of these complex proteins into soluble amino acids directly benefits the acid and methane forming bacteria.



### ANA-ZYME P™

FOR DOSE RATES, SEE PAGE 53

Ana-Zyme P unlocks the full biogas potential of protein-rich substrates by breaking them down in a way that methanogens cannot.

- Improves biogas production
- Reduction in volatile solids
- Increased flexibility in feed stocks

5 gal case ..... \$53.00/gal

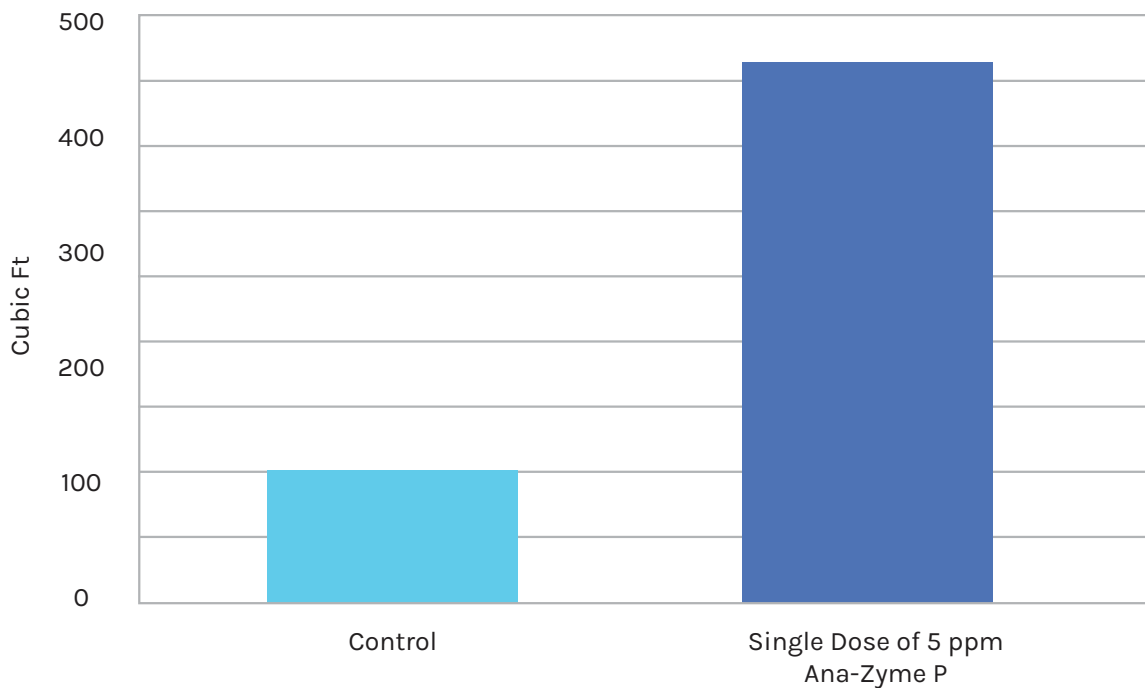
55 gal drum ..... \$45.00/gal

275 gal tote ..... \$44.00/gal





### TOTAL METHANE GENERATION OVER 40 DAYS



## BOOST DIGESTER PERFORMANCE

Running a digester with great gas production and few upsets requires a robust population of methanogens. Aquafix's anaerobic line supplies these important methane formers with key

components to help keep them healthy and functioning. For digesters with chronic problems and difficult operating conditions, our team is here to problem solve and optimize.



### BioGas1™

FOR DOSE RATES, SEE PAGE 54

BioGas1 boosts methane production, improves the function of methane forming bacteria, and speeds conversion of volatile acids to help anaerobic digesters become more stable.

*\*Custom formulations available on request.*

55 gal drum ..... \$23.00/gal

275 gal tote ..... \$21.00/gal



### ANAEROBIC FOOD SUPPLEMENT™

FOR DOSE RATES, SEE PAGE 52

This food supplement contains the building blocks of anaerobic life to build and maintain methanogen populations. Great for digester startup and when loading is low or inconsistent.

1-9 pails ..... \$9.00/lb

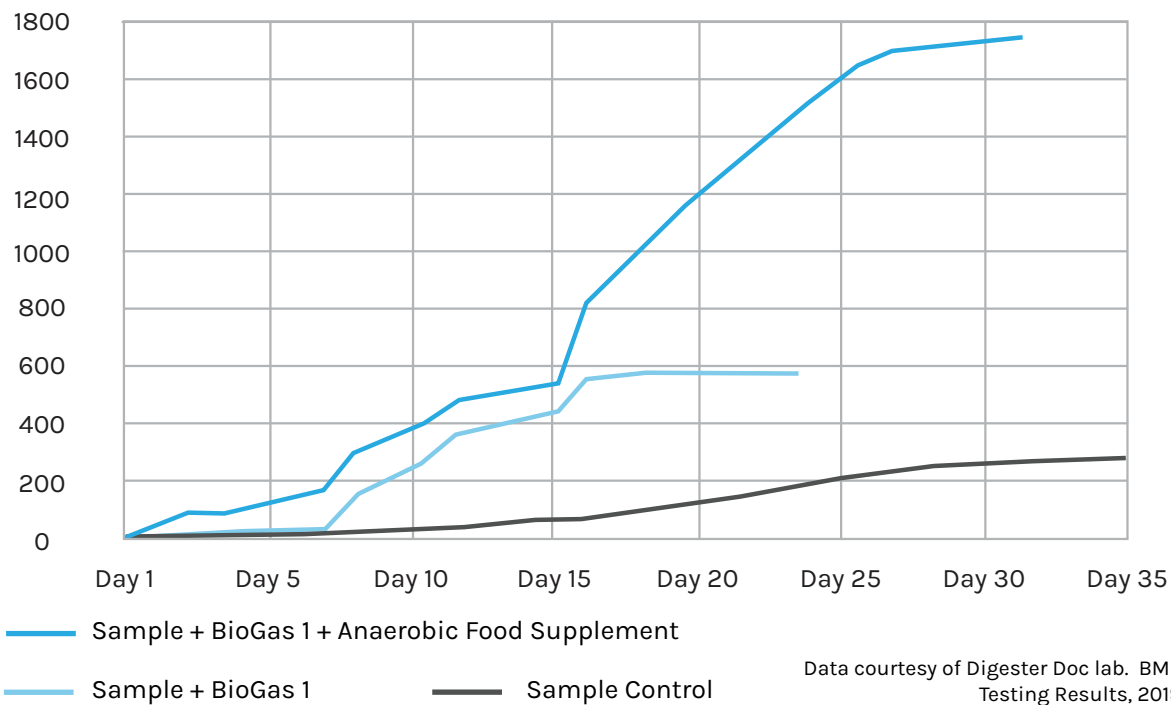
10-22 pails ..... \$8.35/lb

23+ pails ..... \$7.70/lb

*\*Anaerobic Food Supplement comes in 30 lb bulk pails.*



## METHANE ACCUMULATION (N<sub>M</sub>L): ANAEROBIC LAGOON





# EASIER METERING!



# QUANTITY DISCOUNTS

# REMOVAL OF FAT DEPOSITS IN WATER

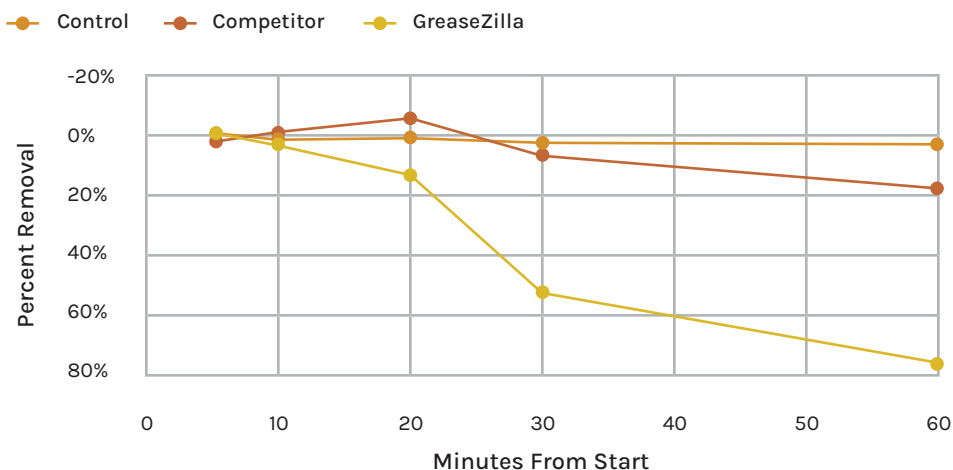
## STUDY SUMMARY

Wisconsin Institute for Sustainable Technology at UW-Stevens Point conducted a study of FOG (fat, oil, and grease) control by GreaseZilla versus a major competitor.

Products were tested on butter, coconut oil, lard, a combination of those three, and an active lift station grease sample. The lift station chosen was a municipal station that primarily received fast food restaurant waste.

- Products were tested against each other and a control
- The municipal system that primarily receives fast food waste, where the restaurant grease sample was taken, then volunteered to replicate this study in the field. Their results confirmed our data.
- GreaseZilla worked 20-63% better than the competitor in every sample area

## PRODUCTS VS CONTROL TREATMENTS ON LIFT STATION SAMPLE



Wisconsin Institute for Sustainable Technology  
College of Natural Resources  
**University of Wisconsin - Stevens Point**

Within

# 1 Hour

Greasezilla

Removed

# 76.4%

Of Fat in a Lift

Station Sample

# VS.

The Competitor Product

Seeing

# 0%

Fat Removal

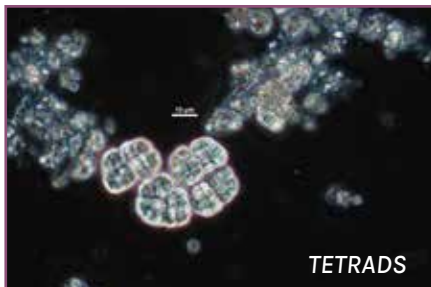
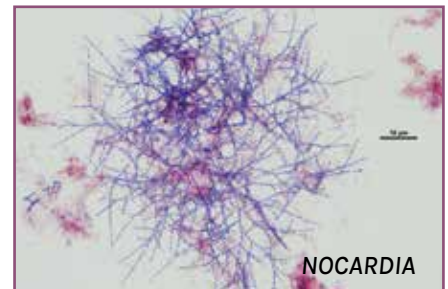
**In all tested sources, the addition of GreaseZilla significantly increased fat removal.**

# COMMON FILAMENT & MICROORGANISM DATABASE

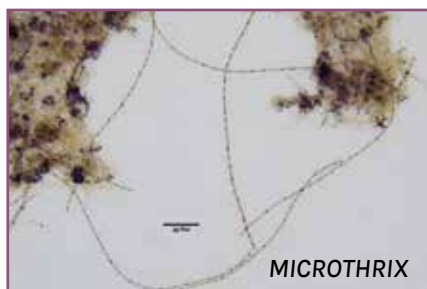
**EASILY IDENTIFY  
THE SPECIFIC  
ORGANISMS IN  
YOUR PROCESS**



**UNDERSTAND  
CAUSES AND  
GAIN EFFECTIVE  
SOLUTIONS**



**DETAILED INFO  
ON DOZENS OF  
WASTEWATER  
ORGANISMS**







**PARTNER WITH  
AQUAFIX TO IMPROVE  
YOUR PROCESS!**

**CALL 888.757.9577**





# AQUAFIX

## Wastewater Laboratories

University of Wisconsin Research Park

## HOW SLUDGE RX INFLUENCES MICROBIAL COMMUNITIES, AND THE EFFECT ON ORGANIC CARBON AND NUTRIENT LEVELS.

### Study Info

#### STUDY COMPLETED BY

City of Sparta, GA

#### STUDY TIME PERIOD

2021-2022

#### KEYWORDS

Lagoons, Sludge, BOD, Fecal Coliforms

### Highlights

- Wastewater lagoons are efficient in nutrient removal while presenting minimal operational challenges, however, sludge buildup can be a real problem
- Dredging and land application of sludge is very costly, while biological sludge reduction can be much more affordable and effective
- Sludge Rx was applied monthly to this wastewater lagoon, twice in Fall of 2021 and twice in early Spring of 2022
- Results showed an average of 1.93 feet of sludge was removed from the lagoon system

### Abstract

Sludge—whether it's in a lagoon, oxidation ditch, or aerator—is a rich source of carbon, nitrogen, phosphorus, and all the nutrients at the bottom that make up the “internal nutrient reservoir.” These nutrients are released fastest when waters are warm in the summer. Once the sludge gets a few inches thick anoxic—or anaerobic—activity begins, which releases soluble reactive phosphate, ammonia, and nitrates.

Sludge buildup, over time, presents the operator with one of two options; dredge or treat biologically. Dredging is often very costly, especially when most lagoons can be found in rural, small-town communities with limited access to resources. Biological treatments have been proven to be a much more cost-effective solution.

Sparta operators pulled samples from their lagoon and performed a jar test using Sludge Rx. Initial testing indicated they should see a positive reduction in the ponds, and so they took advantage of AquaFix's lagoon research program.



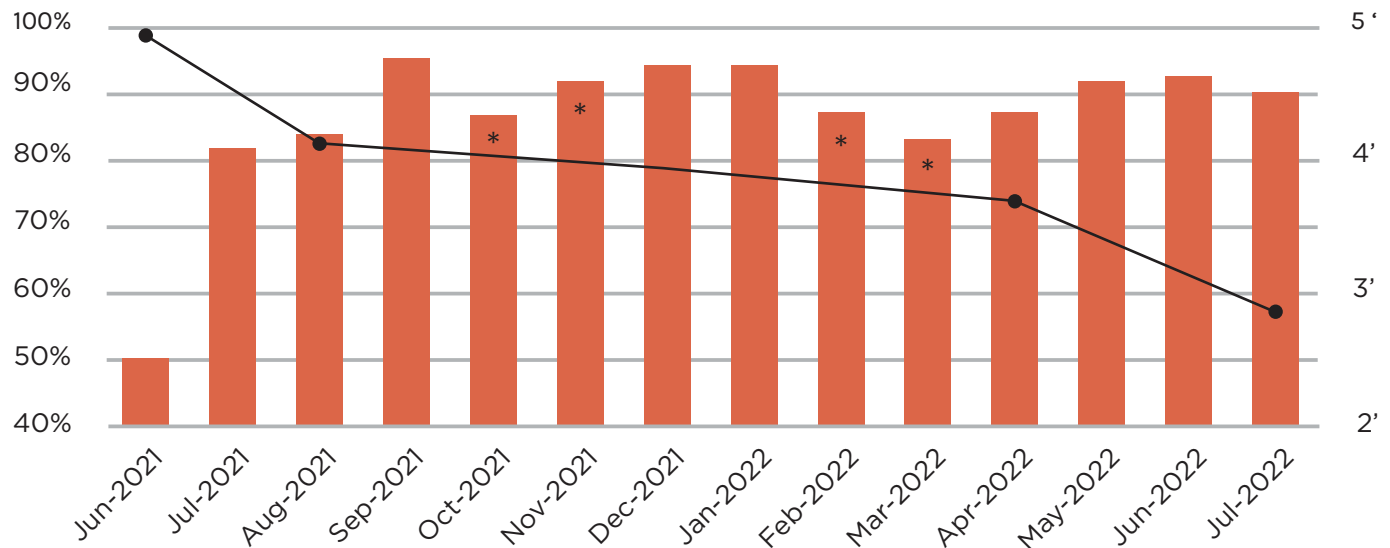
Partnering with AquaFix allowed Sparta, Georgia, a small community with limited resources, to successfully incorporate the innovative biosciences AquaFix provides to remediate their wastewater lagoon.

## Conclusion

After treating for four non-consecutive months, the city of Sparta's lagoon system demonstrated Sludge Rx's efficacy in improving wastewater treatment. Sludge levels were reduced by an average of 1.93 feet, with a reduction of almost 5 feet in certain areas. BOD removal was increased from 83% to 90%. Fecal coliforms were reduced to a quarter of the amount contained in the lagoon prior to treatment. Qualitative results were also successfully demonstrated. Water quality was improved and algae blooms were greatly reduced.

### Average BOD Removal (Bars)

### Average Sludge Depth (Line)



### Fecal Coliforms (colonies per 100 mL)

MM/YYYY	SludgeRx Treatment?	Influent	Effluent
08/2021	-	>60,000	280
09/2021	-	11,000	460
10/2021	YES	-	-
11/2021	YES	-	-
12/2021	-	>200,000	1400
02/2022	YES	-	-
03/2022	YES	>200,000	82
06/2022	-	>200,000	256
2021 AVERAGE	-	-	713.3
2022 AVERAGE	-	-	169
TOTAL CHANGE	-	-	-544.3

## DOSAGE RATES

- Contact your Aquafix Technical Consultant for personalized recommendations (pg 8)
- Quantity discounts available for plants larger than 3 MGD



### Accelerator 7

more details available online

#### Standard Dosing

Flow Rate Gallons per day	Initial Dose Once per day for 30 days	Maintenance Dose Once per day
100,000 GPD	1 lb	0.5 lb
500,000 GPD	5 lb	2.5 lb
1 MGD	10 lb	5 lb

#### Severely Low Nitrogen Dosing

Flow Rate Gallons per day	Initial Dose Once per day for 30 days
100,000 GPD	1.5 lb
500,000 GPD	8 lb
1 MGD	16 lb

1-19 bags .....	\$5.36/lb
20 bags .....	\$4.80/lb
40 bags .....	\$4.30/lb

\*Accelerator 7 comes in 50 lb bags.



### Anaerobic Food Supplement

pg 44

#### Builds Populations of Methane Formers

Flow Rate Gallons per day	Week 1 Once per day	Week 2 Once per day	Week 3 Once per day
10,000 GPD	0.1-2 lb	0.3-0.4 lb	0.5-1 lb
50,000 GPD	0.5-1 lb	1.5-2 lb	2.5-5 lb
100,000 GPD	1-2 lb	3-4 lb	5-10 lb

1-9 pails .....	\$9.00/lb
10-22 pails .....	\$8.35/lb
23+ pails .....	\$7.70/lb

\*Anaerobic Food Supplement comes in 30 lb bulk pails.



## Ana-Zyme G

pg 40

### Grease in Industrial Anaerobic Digester or Anaerobic Lagoon

Initial Dose Weekly for 1 month	Maintenance Dose Weekly thereafter
5-10 gal per 500,000 gal <b>tank volume</b>	2.5 gal per 50,000 gal <b>daily inflow</b>

### Grease in Municipal Anaerobic Digester or Anaerobic Lagoon

Initial Dose Weekly for 1 month	Maintenance Dose Weekly thereafter
5 gal per 500,000 gal <b>tank volume</b>	1.25 gal per 50,000 gal <b>daily inflow</b>

5 gal case ..... \$39.00/gal  
 55 gal drum ..... \$32.00/gal  
 275 gal tote ..... \$29.00/gal



## Ana-Zyme P

pg 42

### Complex Proteins in Industrial Anaerobic Digester or Anaerobic Lagoon

Initial Dose Weekly for 1 month	Maintenance Dose Weekly thereafter
5-10 gal per 500,000 gal <b>tank volume</b>	2.5 gal per 50,000 gal <b>daily inflow</b>

### Complex Proteins in Municipal Anaerobic Digester or Anaerobic Lagoon

Initial Dose Weekly for 1 month	Maintenance Dose Weekly thereafter
5 gal per 500,000 gal <b>tank volume</b>	1.25 gal per 50,000 gal <b>daily inflow</b>

5 gal case ..... \$53.00/gal  
 55 gal drum ..... \$45.00/gal  
 275 gal tote ..... \$44.00/gal





## Argos

more details available online

### Lagoon Algaecide

*For best results, spray evenly over surface targeted area.*

1 Acre Lagoon, 5 Feet Deep		Water	Argos	PondZilla Pro
Moderate Dose	Tank Mix:	100 gal	7.5 gal	3 gal
Light Dose	Tank Mix:	40 gal	3.5 gal	1 gal
Acre/Ft Dosing (Lagoon size in acres) x (Lagoon depth in feet)		Water	Argos	PondZilla Pro
Moderate Dose	Tank Mix:	17 gal	1.7 gal	0.6 gal
Light Dose	Tank Mix:	0.5 gal	1 qt	1 pt

5 gal case ..... \$47.00/gal



## BioGas1

pg 44

Initial Loading Dose		Maintenance Dose	
Tank Volume	Dose Rate One time	Flow Rate Gallons per day	Dose Rate Once per week
10,000 gal	0.5 gal	10,000 GPD	0.5 gal
50,000 gal	2.5 gal	50,000 GPD	2.5 gal
100,000 gal	5 gal	100,000 GPD	5 gal

5 gal jug ..... \$30.00/gal  
 55 gal drum ..... \$23.00/gal  
 275 gal tote ..... \$21.00/gal



## Boost N Lock

more details available online

### Stabilize pH in Aerobic and Anaerobic Wastewater Systems

*\*General dose rates; exact rates are determined by titration. Call us for titration help.*

pH < 6	Use our high purity magnesium hydroxide
pH > 6	Initial Dose: 400 lb per MGD per day until pH is neutralized Maintenance Dose: 20 lb per MGD per day

40 lb bag ..... \$2.90/lb  
 2000 lb pallet ..... \$1.80/lb



## Bug On A Rope®

pg 24

### Dissolving Rates When Placed Under Incoming Flow

Flow Rate Gallons per day	Life Span Knock off remains into lift station; replace as necessary.
50,000 GPD	10 weeks
100,000 GPD	4 weeks
500,000 GPD	2 weeks

9 lb brick ..... \$165.00

Case of 4 bricks ..... \$575.00



## CounterQuat™

pg 12

### Recovery From Severe Toxicity

Flow Rate Gallons per day	Initial Dose Once per day	Maintenance Dose Once per day
250,000 GPD	2.5 gal	1.5 gal
500,000 GPD	5 gal	3 gal
1 MGD	10 gal	6 gal

### Preventative Dose

Flow Rate Gallons per day	Initial Dose Once per day	Maintenance Dose Once per day
250,000 GPD	1 gal	1 qt
500,000 GPD	2 gal	0.5 gal
1 MGD	4 gal	1 gal

5 gal case ..... \$45.00/gal

55 gal drum ..... \$43.00/gal

275 gal tote ..... \$35.00/gal



## DAZZeL Eco Plus

[more details available online](#)

### Ultra Concentrate Wastewater Odor Control

Lagoon	1 gal of concentrate per acre, as needed
Waste Pit	1 pt of concentrate per 1,000 gal
Wastewater Plant	Dilute 20:1 and spray perimeter, or meter into wastestream

5 gal case ..... \$171.40/gal  
 55 gal drum ..... \$161.00/gal  
 275 gal tote ..... \$160.14/gal



## DAZZeL Gamma

[more details available online](#)

### Dairy Odor Control

Atomize 1 gallon per day per 100,000 gal flow rate

5 gal case ..... \$34.80/gal  
 55 gal drum ..... \$27.00/gal



## DAZZeL Sewer Sweetener

**pg 36**

### Fast-acting Odor Control

Flow Rate Gallons per day	Initial Dose Once per day for 10 days	Maintenance Dose Once per day
100,000 GPD	0.5 gal	1 qt
500,000 GPD	2 gal	1 gal
1 MGD	4 gal	2 gal

5 gal case ..... \$35.70/gal  
 55 gal drum ..... \$27.00/gal  
 275 gal tote ..... \$25.50/gal



## DeFoam 3000

pg 18

### Wastewater Treatment Plant

Flow Rate Gallons per day	Dose Once per day
100,000 GPD	1 pt - 1 qt
500,000 GPD	1 qt - 1 gal
1 MGD	2 qt - 2 gal

### Anaerobic Digester

Digester Capacity	Initial Dose Contact your technical rep for assistance with maintenance dosing
500,000 gal	1-5 gal
1,000,000 gal	5-10 gal

5 gal case ..... \$48.00/gal  
 55 gal drum ..... \$41.00/gal  
 275 gal tote ..... \$40.50/gal



## De-Sulph-A-Nator

pg 36

### Lift Station, Collection Systems, and Sewer Lines

Flow Rate Gallons per day	Dose Once per day
10,000 GPD	15-60 oz
100,000 GPD	1-4.5 gal
1 MGD	12-45 gal

### Sludge Storage Tank

Tank Size	Dose Once per week
100,000 gal	5 gal
500,000 gal	25 gal
1,000,000 gal	50 gal

5 gal case ..... \$38.00/gal  
 55 gal drum ..... \$33.00/gal  
 275 gal tote ..... \$31.62/gal





## Duckweed Complete

more details available online

### Surface Application

1/4 Acre (Spot Treatments)	4 oz Flumigard™ + 1 qt PondZilla Pro
1 Acre	1 lb Flumigard™ + 1 gal PondZilla Pro
4 Acres	4 lb Flumigard™ + 4 gal PondZilla Pro

### Subsurface Application

1/4 Acre (Spot Treatments)	1 lb Flumigard™ + 1 gal PondZilla Pro
1 Acre	4 lb Flumigard™ + 4 gal PondZilla Pro
4 Acres	16 lb Flumigard™ + 16 gal PondZilla Pro

*\*Flumigard™ also kills filamentous algae and select aquatic weeds. For 1-4 acre treatments blend Duckweed Complete with water in a 30 to 50 gallon agricultural sprayer.*

5 lb Flumigard + 5 gal PondZilla Pro ..... \$1,326.00



## Dynamic Duo

pg 10

### Water Temperature Below 60°F (15.6°C)

Flow Rate Gallons per day	Days 1-10 Once per day
100,000 GPD	30 oz
1 MGD	2.5 gal

### Water Temperature Between 60-72°F (15.6-22.2°C)

Flow Rate Gallons per day	Days 1-4 Once per day	Days 5-10 Once per day
100,000 GPD	12 oz	1.5 oz
1 MGD	1 gal	12 oz

### Water Temperature Above 72°F (22.2°C)

Flow Rate Gallons per day	Days 1-2 Once per day	Days 3-10 Once per day
100,000 GPD	12 oz	1.5 oz
1 MGD	1 gal	12 oz

2 gal case (1 gal of each) ..... \$550.00



## Foam Buster

pg 16

### *Nocardia* or *Microthrix* Treatment

Flow Rate Gallons per day	Initial Dose Once per day for 30 days	Maintenance Dose Once per day
100,000 GPD	2 lb	1 lb
500,000 GPD	4 lb	2 lb
1 MGD	8 lb	4 lb

30 lb pail (1 lb packets) ..... \$10.70/lb

50 lb bag ..... \$6.80/lb



## GreaseJett

more details available online

### Jet Truck Grease Application

Step 1	Add 1 gal of GreaseJett per 1,000 gal of water in jet truck
Step 2	Apply the solution as you jet the line upstream
Step 3	Let soak for 15 minutes, jet again and retrieve the line

5 gal case ..... \$27.00/gal

55 gal drum ..... \$23.00/gal

275 gal tote ..... \$21.00/gal



## GreaseZilla

pg 22

### Lift Stations, Collection Systems, and Sewer Lines

Flow Rate Gallons per day	Initial Dose Once per day for 1-2 weeks	Maintenance Dose Twice per week
10,000 GPD	6.5 oz	6.5 oz
100,000 GPD	0.5 gal	0.5 gal

### Grease Traps

Grease Trap Size	Heavy Dose Twice per week	Maintenance Dose Once per week
1,000 gal	0.5 gal	8 oz
10,000 gal	5 gal	0.5 gal
20,000 gal	10 gal	1 gal

5 gal case ..... \$40.80/gal

55 gal drum ..... \$35.00/gal

275 gal tote ..... \$31.62/gal



## Midge Fly Complete

pg 28

### Wastewater Treat Plants

Flow Rate Gallons per day	Initial Dose Once per day for 1-2 weeks	Maintenance Dose Twice per week
100,000 GPD	0.5 gal AQUABACxt + 0.5 gal Lar-V-Zyme	1 pt AQUABACxt + 1 pt Lar-V-Zyme
500,000 GPD	2.5 gal AQUABACxt + 2.5 gal Lar-V-Zyme	5 pt AQUABACxt + 5 pt Lar-V-Zyme
1 MGD	5 gal AQUABACxt + 5 gal Lar-V-Zyme	10 pt AQUABACxt + 10 pt Lar-V-Zyme

### Wastewater Lagoons

Lagoon Size	Heavy Dose Twice per week	Maintenance Dose Once per week
1 Acre	2.5 gal AQUABACxt + 2.5 gal Lar-V-Zyme	1 gal AQUABACxt + 1 gal Lar-V-Zyme
4 Acres	10 gal AQUABACxt + 10 gal Lar-V-Zyme	4 gal AQUABACxt + 4 gal Lar-V-Zyme
8 Acres	20 gal AQUABACxt + 20 gal Lar-V-Zyme	8 gal AQUABACxt + 8 gal Lar-V-Zyme

5 gal each ..... \$570.00



## OxyFresh

pg 37

### For Low Dissolved Oxygen

Flow Rate Gallons per day	Dose Once per day
100,000 GPD	0.5-1.5 gal
500,000 GPD	1-3 gal
1 MGD	2-6 gal

### OxyFresh in Lagoons (Based on 6 ft Depth)

Lagoon Size	Dose Once per day
0.25 Acre	1.5 gal
1 Acre	6 gal

\*Dose will vary depending on conditions, consult with an Aquafix Technical Rep.

5 gal case ..... \$27.20/gal  
55 gal drum ..... \$19.50/gal  
275 gal tote ..... \$16.32/gal



## OxyPaks XL

[more details available online](#)

### Oxygen Source for Lagoon Bacteria

Lagoon Clean-up	Add 100 lb per surface acre, once per month
WWTP Sand Filter	2-4 lb per 100,000 gal of backwash

1-23 (50 lb pails, 1 lb packets) ..... \$6.64/lb  
 24+ (50 lb pails, 1 lb packets) ..... \$6.12/lb



## PondZilla Pro

[more details available online](#)

### Booster for Algaecides

Diluted and Blended with Algaecide	0.5-3 gal per acre depending on severity of algae
------------------------------------	---

5 gal case ..... \$90.00/gal  
 55 gal drum ..... \$70.00/gal



## Qwik-Zyme CS

[more details available online](#)

### Break Down Corn Syrup and Starch

Flow Rate Gallons per day	Initial Dose Once per day	Maintenance Dose Three time per week
10,000 GPD	4 oz	2 oz
100,000 GPD	1 qt	1 pt
500,000 GPD	1.25 gal	2.5 qt
1 MGD	2.5 gal	5 qt

5 gal case ..... \$73.00/gal  
 55 gal drum ..... \$68.00/gal





## Qwik-Zyme D

pg 30

### For Digester Sludge Reduction

Digester Volume Gallons	Initial Dose Once per day for 60 days	Maintenance Dose Once per day
100,000 GPD	0.5 gal	1 qt
300,000 GPD	1.5 gal	3 qt
500,000 GPD	2.5 gal	1.25 gal

5 gal case ..... \$74.00/gal  
 55 gal drum ..... \$68.00/gal  
 275 gal tote ..... \$64.00/gal



## Qwik-Zyme L

pg 16 & 20

### Microthrix Parvicella Foam & WWTP Grease

*For Nocardia foam, dose 2-4 times more, paired with Foam Buster*

Flow Rate Gallons per day	Initial Dose Once per day for 1 month	Maintenance Dose Once per day
10,000 GPD	4 oz	2 oz
100,000 GPD	1 qt	1 pt
500,000 GPD	5 qt	2.5 qt
1 MGD	2.5 gal	5 qt

### Lift Stations & Sewer Lines

Flow Rate Gallons per day	Initial Dose Three times per week	Maintenance Dose Once per week
0-250,000 GPD	1 qt	1 qt
250,000-500,000 GPD	2 qt	2 qt
500,000-750,000 GPD	3 qt	3 qt
750,000 GPD - 1 MGD	4 qt	4 qt
1 MGD +	5 qt	5 qt

5 gal case ..... \$39.00/gal  
 55 gal drum ..... \$32.00/gal  
 275 gal tote ..... \$29.00/gal



## Qwik-Zyme P

pg 38

### Degradation of Proteins in Cheese and Dairy Waste

Flow Rate Gallons per day	Initial Dose Once per day for 1 month	Maintenance Dose Once per day
10,000 GPD	4 oz	2 oz
100,000 GPD	1 qt	1 pt
500,000 GPD	5 qt	2.5 qt
1 MGD	2.5 gal	5 qt

5 gal case ..... \$53.00/gal  
 55 gal drum ..... \$45.00/gal  
 275 gal tote ..... \$44.00/gal



## Sludge Rx™

pg 32

### Lagoon Application

30-60 lb per acre once per month

### Aeration Basin Application

30 lb per 10,000 ft<sup>2</sup> twice per month

1-9 bags ..... \$15.00/lb  
 10-29 bags ..... \$11.00/lb  
 30 bags ..... \$8.50/lb

*\*Sludge Rx comes in 30 lb bags.*



## SmartBOD

pg 26

### Standard Dose - Improve Settling, Get Rid of Filaments

Water temperature above 59°F (15°C) ..... 30 lb per 1 MGD once per day

Water temperature below 59°F (15°C) ..... 15 lb per 1 MGD, once per day

### Super Dose - Quickly Grow New Mixed Liquor

New plant startup or severely low F:M ..... 50-100 lb per 1 MGD once per day

1-13 bags ..... \$6.50/lb  
 14-27 bags ..... \$5.50/lb  
 28+ bags ..... \$4.50/lb

*\*SmartBOD comes in 50 lb bags.*



## VitaStim® Cheese Degradizer

[more details available online](#)

### For Dairy Waste

Flow Rate Gallons per day	Initial Dose Once per day for 1 month	Maintenance Dose Every other day for 1 month
100,000 GPD	0.5 lb	0.5 lb (every other day)
500,000 GPD	2.5 lb	1 lb
1 MGD	5 lb	2.5 lb

30 lb pail (1/2 or 1 lb packets) ..... \$25.50/lb



## VitaStim® Grease

[more details available online](#)

### Grease in WWTP or Lift Station

Flow Rate Gallons per day	Initial Dose Once per day for 1 month	Maintenance Dose Once per day
100,000 GPD	0.5 lb	0.5 lb (every other day)
500,000 GPD	2.5 lb	1 lb
1 MGD	5 lb	2.5 lb

30 lb pail (1/2 or 1 lb packets) ..... \$17.00/lb



## VitaStim® Manure Supplement

[more details available online](#)

### Manure Digesting Bacteria

Initial Dose	1 lb per 100 cows once per week for 1 month
Maintenance Dose	0.5 lb per 100 cows once per week

30 lb pail (1/2 lb packets) ..... \$19.50/lb



## VitaStim® Polar

pg 34

### For Water Temperatures Below 65°F (18.3°C)

Lagoon Size	Standard Dose Once per day	Ammonia Lowering Dose Once per day
1 Acre	0.5 lb	2 lb
4 Acre	1 lb	4 lb
8 Acre	2 lb	8 lb

30 lb pail (1/2 or 1 lb packets) ..... \$17.00/lb



## VitaStim Rebuild

pg 14

### For Recovery After Toxicity or Upset

Flow Rate Gallons per day	Initial Dose Once per day for 10 days	Additional Dose Once per day for next 20 days
100,000 GPD	1 lb	0.5 lb
500,000 GPD	5 lb	2.5 lb
1 MGD	10 lb	5 lb

30 lb pail (1/2 or 1 lb packets) ..... \$17.50/lb



## VitaStim® Sludge Reducer and Summer Slam

pg 34

### For Water Temperatures Above 65°F (18.3°C)

Lagoon Size	Clean Up Dose Once per day	Maintenance Dose
1 Acre	0.5 lb	0.5 lb three times per week
4 Acre	2 lb	0.5 lb per day
8 Acre	4 lb	1 lb per day

Sludge Reducer: 30 lb pail (1/2 or 1 lb packets) ..... \$16.00/lb

Summer Slam: 30 lb pail (1/2 or 1 lb packets) ..... \$19.00/lb





## VitaStim® Surfactants

more details available online

### Degrading Surfactants and Emulsions

Flow Rate Gallons per day	Initial Dose Once per day for 30 days	Maintenance Dose Once per day for 30 days
100,000 GPD	1 lb	0.5 lb (every other day)
500,000 GPD	2.5 lb	1 lb
1 MGD	5 lb	2.5 lb

30 lb pail (1/2 or 1 lb packets) ..... \$22.50/lb



## VitaStim® Winery

more details available online

### Digesting Winery Waste

Flow Rate Gallons per day	Initial Dose Once per day for 1 month	Maintenance Dose Once per day
10,000 GPD	3.2 oz	0.8 oz
50,000 GPD	1 lb	4 oz
100,000 GPD	2 lb	0.5 lb

30 lb pail (1/2 or 1 lb packets) ..... \$18.50/lb



## Aquafix Laboratories

### Fast and Accurate Wastewater Lab Testing

Single Wastewater Microanalysis	\$400/test
Proactive Microanalysis (4 Pack)	\$1400 (\$350/test)
Treatability Testing	Call for custom quote
Anaerobic Chemistry Screening	\$1,150/test



*"Whenever we have our aeration basin blowers down for maintenance or a slug load comes in, Dynamic Duo helps bring our nitrification back quickly."*

- Jake, IL  
Dynamic Duo, pg 8



*"The grease problem was solved and subsequent televising of the sanitary lines found them to be as clean as new. GreaseZilla has saved the restaurants and the WWTP a lot of money."*

- Bruce, WI  
GreaseZilla, pg 22



*"The Qwik-Zyme L and Foam Buster helped degrade our greases and reduce foam when added directly in our basins."*

- Kyle, CO  
Qwik-Zyme L and Foam Buster, pg 10



*"VitaStim Rebuild is a life saver for wastewater treatment plants when your plants are under stress. VitaStim Rebuild is like a vitamin boost for the microorganisms in your wastewater."*

- Carl, KY  
VitaStim Rebuild, pg 32

# TELL YOUR STORY

## SHARE YOUR VOICE AS AN INSPIRING WOMAN OF WASTEWATER

Whether you're in the field, behind a desk, or in front of a microscope, we want to hear your story about being a woman in the wastewater industry! The Inspiring Women of Wastewater™ program is all about highlighting women in this fulfilling and challenging industry, to show incoming generations that this is a career they can achieve and grow with.

Contact us to be entered and to show incoming generations what they can achieve in the field of wastewater:

[www.teamaquafix.com/women-of-wastewater](http://www.teamaquafix.com/women-of-wastewater)



## INSPIRING WOMAN OF WASTEWATER 2022: LESLIE GLOVER

Industrial Pre-treatment  
Program Coordinator,  
Tennessee Municipality

Time in the Industry: 19 Years

*"I greatly enjoy being able to work with the public. My favorite has been the opportunities I've had to work with school children. We participate in events where we get to show them how the microorganisms work in the plant and how some of our laboratory tests are performed. The response has always been positive, and kids are always amazed at our processes."*

## Certificates Available

## The Latest Research

## Free & Easy To Join



Dan McKeaton,  
Aquafix Director of Wastewater Education

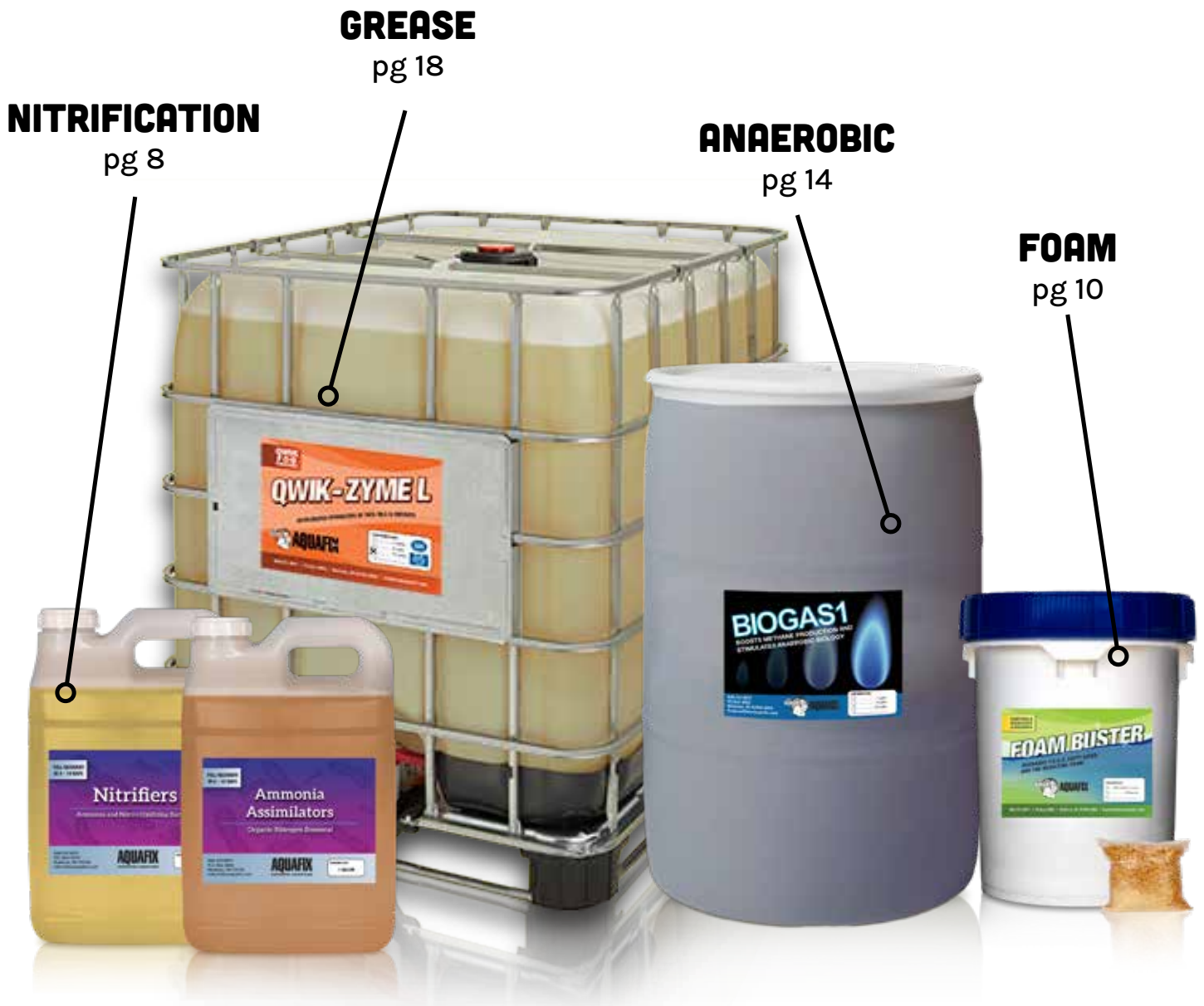
JANUARY 25	COLD WEATHER EFFECTS ON NITRIFICATION AND AMMONIA REMOVAL
MARCH 22	NEW METHODS FOR BIOSOLID & LAGOON SLUDGE REDUCTION
MAY 24	FILAMENT IDENTIFICATION & MICROANALYSIS TECHNIQUES
JULY 19	RECOVERING FROM SUMMERTIME TOXICITY ISSUES
SEPTEMBER 20	DIGESTING FEEDSTOCKS FOR IMPROVED BIOGAS PRODUCTION
NOVEMBER 15	BREAKING DOWN GREASE TO PREVENT FOAMING ISSUES

Access simple registration for our training events with a panel of our experts at [www.teamaquafix.com/upcoming-events](http://www.teamaquafix.com/upcoming-events)



# AQUAFIX<sup>Inc.</sup>

P.O. BOX 8682  
MADISON, WI 53708-8682  
WWW.TEAMAQUAFIX.COM  
888.757.9577



**NITRIFICATION**  
pg 8

**GREASE**  
pg 18

**ANAEROBIC**  
pg 14

**FOAM**  
pg 10

## FAST ACCOUNT SETUP & EASY ORDERING:

Call: 888.757.9577  
Monday - Friday  
7:30 am - 4:00 pm CST

Order: [orders@teamaquafix.com](mailto:orders@teamaquafix.com)  
Support: [technicalservice@teamaquafix.com](mailto:technicalservice@teamaquafix.com)

Order online at:  
[www.teamaquafix.com](http://www.teamaquafix.com)

para español, envíe un email a:  
[international@teamaquafix.com](mailto:international@teamaquafix.com)