

Foam Buster

Helps Bacteria Populations Outcompete Foaming Filaments



Foam Buster is a blend of specialized proteins, free amino acids, and micronutrients which stimulate the floc-forming bacteria to degrade grease, emulsions, and helps them to outcompete the filaments which cause foaming. Chlorinating can only provide short term relief, and often only fragments the filaments, leading to worse foaming issues down the road. Foam Buster addresses the underlying cause of foaming.

Foaming filaments like *Nocardia*, *Gordonia amare*, and *Microthrix parvicella* use fatty acids to produce a buoyant cell wall. Foam Buster programs your wastewater plant's naturally occurring bacteria to consume these fatty acids. Foam Buster's vitamins enable certain cellular functions to accomplish this task. Once the degradation of FOG and fatty acids improves, these troublesome filaments cannot survive on the dwindling food supply. Pair with Qwik-Zyme L for maximum effect.



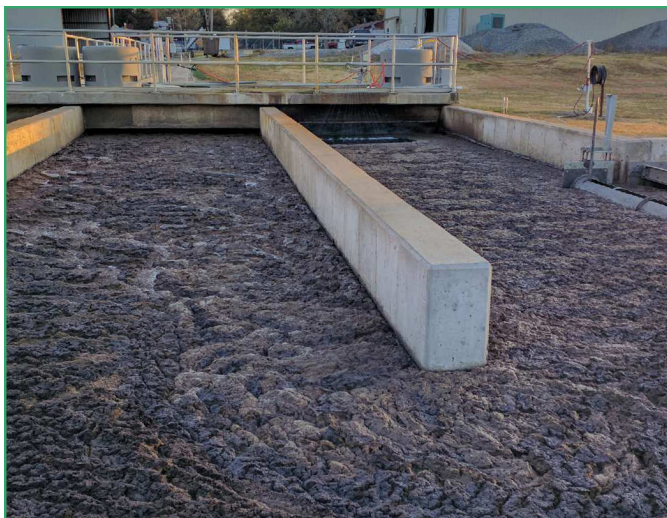
Waste Heavily During Treatment to
Lower Sludge Age

Fixes the Root Cause of
Foaming

Pair with Qwik-Zyme L for
Maximum Effect

Figure 1:

Before and after Foam Buster treatment



P.O. Box 8682
Madison, WI
53708-8682

P: 888.757.9577
F: 866.636.1864

info@teamaquafix.com
www.teamaquafix.com

Dose Rates

Foam Buster



Foam Buster Dosing:

- Add directly to aeration basin, once per day
- Pair with Qwik-Zyme L for best results
- Substantial improvement within 30 days

Available Sizes:

- 50 lb bag
- 30 lb pail with 1 lb water soluble packs

Nocardia or *Microthrix* Treatment

Flow Rate Gallons per day	Initial Dose (First 30 days) Once per day	Maintenance Dose Once per day
100,000 GPD	2 lb	1 lb
500,000 GPD	4 lb	2 lb
1 MGD	8 lb	4 lb

The Importance of Sludge Age:

Foaming filaments take hold when incoming FOG is high, and sludge ages are old. Foam Buster and Qwik-Zyme L work to starve the filament and boost the ability of floc formers to compete. You can help the floc formers compete further by lowering sludge age and wasting heavily during treatment. See the sludge age graph below for a description of how sludge age relates to filament presence.

