

OxyFresh

Liquid Oxygen Source to Combat Low DO Filaments



OxyFresh is a liquid source of oxygen that helps to eliminate the low dissolved oxygen conditions and septicity. These conditions can occur in collection systems as well as activated sludge plants, and lead to bulking filaments like *Thiothrix*/O21N, *h. hydrossis*, *Sphaerotilus natans*/Type 1701, and other filaments with sulfur granules.

OxyFresh helps to offset septicity, promote metabolic activity of aerobic bacteria, and improve ORP.

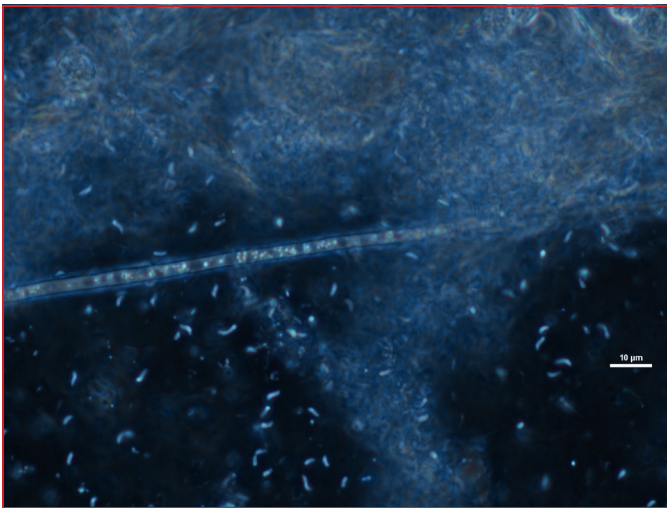
Often the aeration basin may be getting adequate DO, and still have low DO filaments. In these cases the filaments are growing upstream in the collection system and being washed into the plant. Or the filaments are growing in septic pockets of settled sludge in the wastewater plant. Use OxyFresh wherever the low DO conditions exist to eliminate filaments from being washed in.



Gets Rid of Low DO Filaments

Figure 1:

OxyFresh works to lessen low DO filaments like *Thiothrix*, shown below.



Dose Rates

OxyFresh



For Removal of Low DO Filaments

Flow Rate Gallons per day	Dose Once per day
250,000 GPD	0.5 - 1.5 gal
500,000 GPD	1 - 3 gal
1 MGD	2 - 6 gal

OxyFresh Dosing:

- Add daily to collection system, WWTP headworks, or direct to aeration basin
- Can be metered in

Available Sizes:

- 5 gal case
- 55 gal drum
- 275 gal tote

Notes:

<hr/> <hr/> <hr/> <hr/> <hr/> <hr/> <hr/> <hr/> <hr/> <hr/> <hr/> <hr/> <hr/> <hr/> <hr/> <hr/> <hr/> <hr/> <hr/> <hr/> <hr/> <hr/> <hr/> <hr/>	<hr/> <hr/> <hr/> <hr/> <hr/> <hr/> <hr/> <hr/> <hr/> <hr/> <hr/> <hr/> <hr/> <hr/> <hr/> <hr/> <hr/> <hr/> <hr/> <hr/> <hr/> <hr/> <hr/> <hr/>
---	---