

SmartBOD

A Smarter Carbon Source for Wastewater



SmartBOD is an advanced carbon source that provides the building blocks of biological life. This product offers a cost-effective solution for chronic issues related to low food, and flows that are lower than plant design. SmartBOD contains bioavailable amino acids, complex proteins, carbohydrates, and micronutrients that bacteria in biological wastewater processes require in order to build floc and effectively remove nutrients.

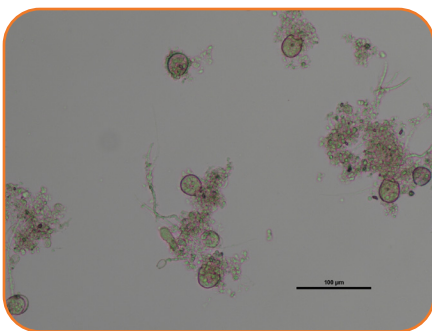
Wastewater plants fed with SmartBOD have better settling properties and produce clearer effluent than plants fed with other carbon supplements. And plants with a history of low F:M filaments like Type 1851 and Type 0041/0675 become less prone to filament outbreaks.



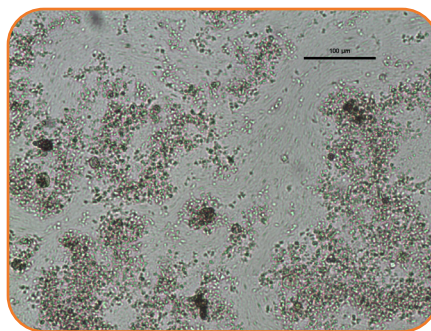
- Perfectly balanced nutrient profile
- Proven to outperform glycerin and dog food
- Also helps new plants start up

Figure 1:

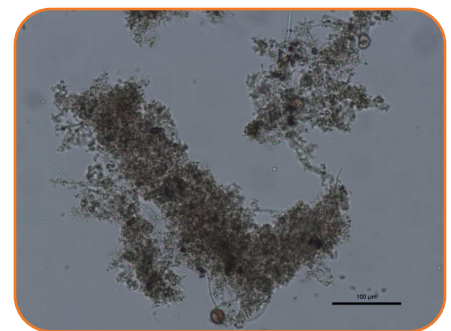
Floc formation before and after SmartBOD treatment



Day 1:
Poor nutrient balance resulted in only partial floc formation.



Day 7:
After adding SmartBOD for seven days, bacterial health is improving.



Day 14:
Flocs are fully formed and settling well.



PO Box 8682
Madison, WI
53708-8682

P: 888.757.9577 info@teamaquafix.com
F: 866.636.1864 www.teamaquafix.com

Dose Rates

SmartBOD



Standard Dose - Improve Settling, Get Rid of Filaments

Water Temperature Above 59° F (15° C)	30 lb per 1 MGD, once per day
Water Temperature Below 59° F (15° C)	15 lb per 1 MGD, once per day

Super Dose - To Quickly Grow New Mixed Liquor

New Plant Startup or Severely Low F:M	50-100 lb per 1 MGD, once per day
---------------------------------------	-----------------------------------

Available Size:

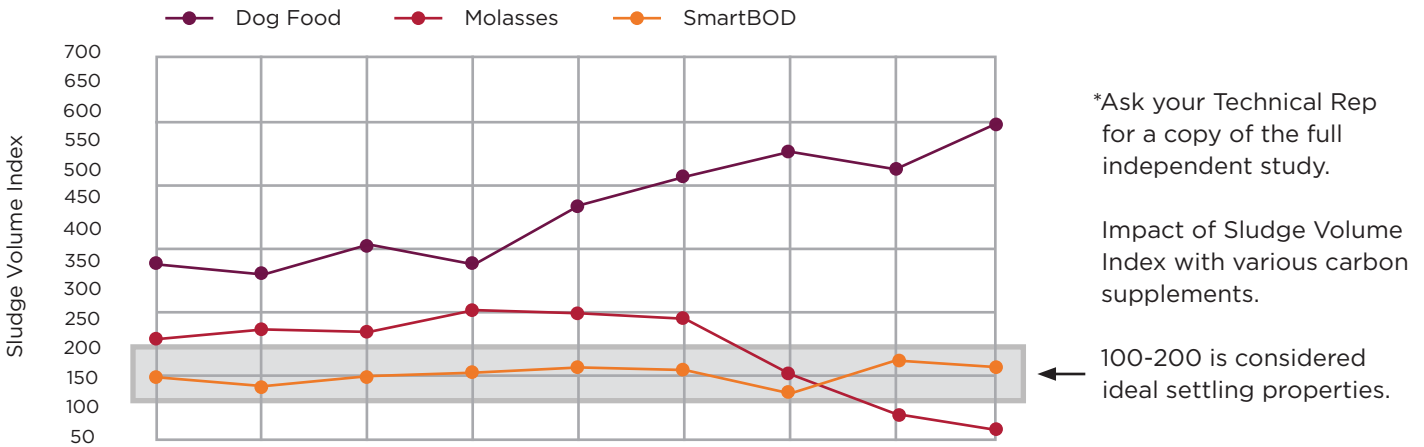
- 50 lb Bag

SmartBOD Dosing:

- Add daily, directly to aeration basin
- Contact an Aquafix Technical Rep for a custom dose based on your incoming BOD

Figure 2:

Sludge Volume Index, as measured by researchers at University of Wisconsin - Stevens Point



*Ask your Technical Rep for a copy of the full independent study.

Impact of Sludge Volume Index with various carbon supplements.

100-200 is considered ideal settling properties.

Notes:
